

U.S. Drought Monitor

Arkansas-White-Red Watershed

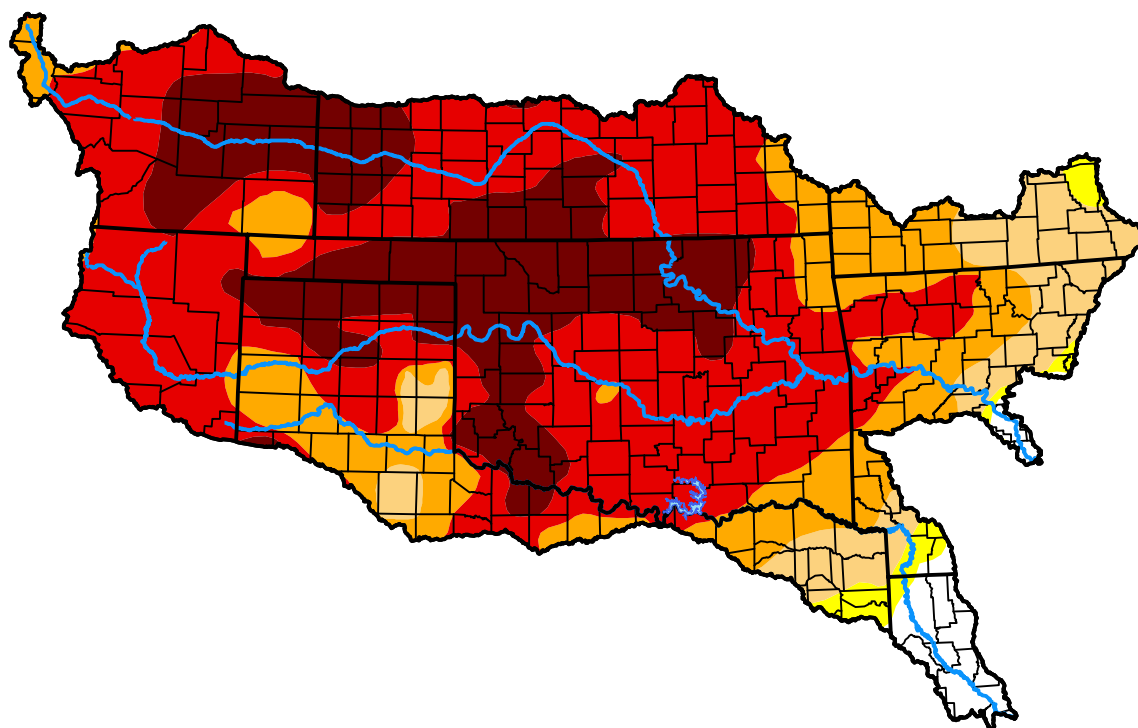
January 15, 2013

(Released Thursday, Jan. 17, 2013)

Valid 7 a.m. EST

Drought Conditions (Percent Area)

	None	D0-D4	D1-D4	D2-D4	D3-D4	D4
Current	3.01	96.99	95.27	86.79	68.94	24.21
Last Week <i>01-10-2013</i>	3.02	96.98	95.76	90.40	76.28	25.87
3 Months Ago <i>10-18-2012</i>	2.95	97.05	95.54	88.81	56.34	18.60
Start of Calendar Year <i>01-03-2013</i>	2.70	97.30	95.76	90.40	77.11	26.21
Start of Water Year <i>09-27-2012</i>	1.37	98.63	97.75	92.40	71.23	28.23
One Year Ago <i>01-19-2012</i>	21.14	78.86	66.96	44.24	17.11	2.17



Intensity:

None	D2 Severe Drought
D0 Abnormally Dry	D3 Extreme Drought
D1 Moderate Drought	D4 Exceptional Drought

The Drought Monitor focuses on broad-scale conditions. Local conditions may vary. For more information on the Drought Monitor, go to <https://droughtmonitor.unl.edu/About.aspx>

Author:

David Simeral
Western Regional Climate Center



droughtmonitor.unl.edu