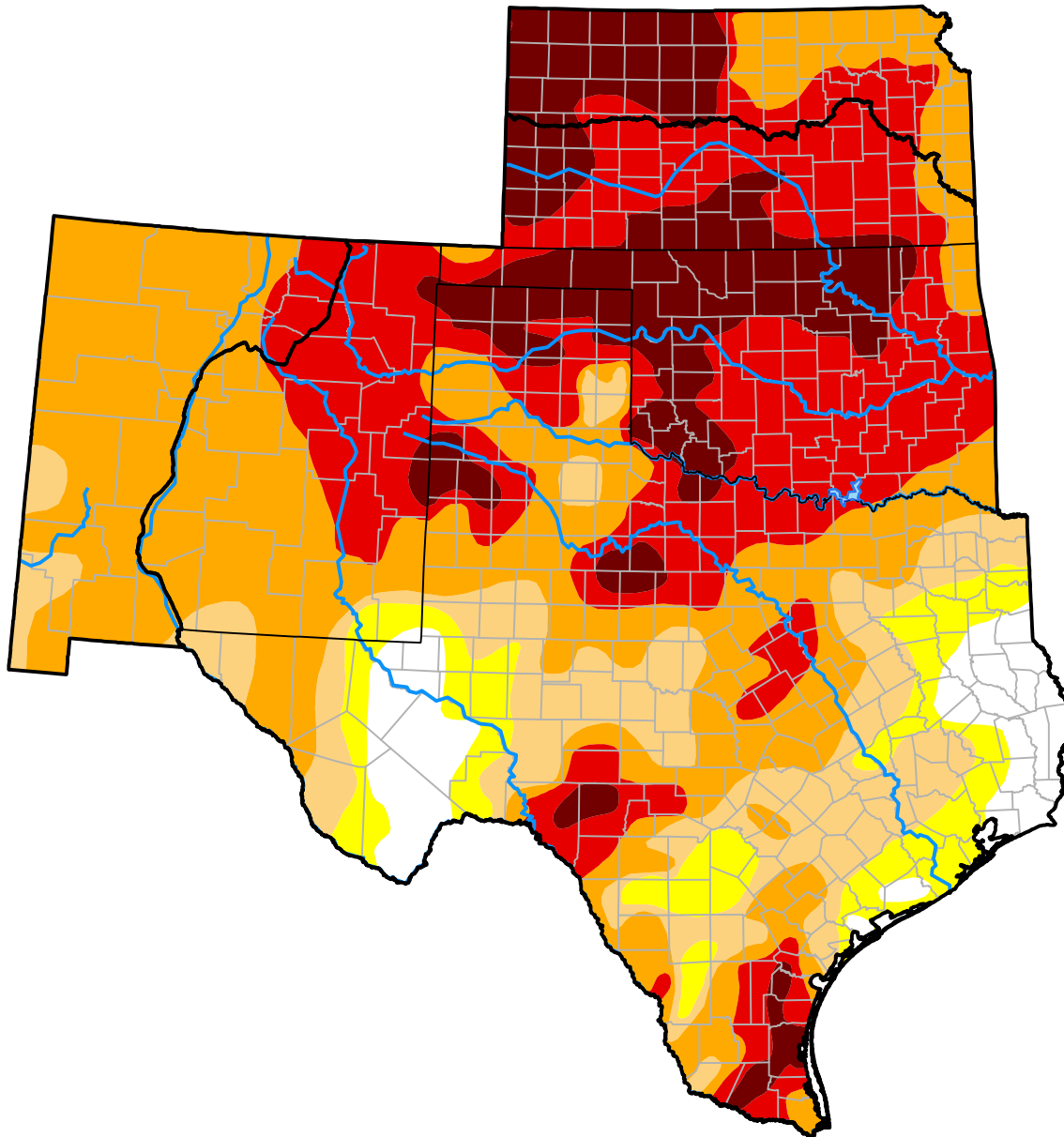


U.S. Drought Monitor

Southern Plains RDEWS

January 29, 2013
 (Released Thursday, Jan. 31, 2013)
 Valid 7 a.m. EST



Drought Conditions (Percent Area)

	None	D0-D4	D1-D4	D2-D4	D3-D4	D4
Current	6.08	93.92	85.74	69.70	33.70	10.13
Last Week <i>01-24-2013</i>	5.50	94.50	84.50	69.38	34.83	10.22
3 Months Ago <i>11-01-2012</i>	8.94	91.06	75.21	52.49	22.83	6.47
Start of Calendar Year <i>01-03-2013</i>	1.76	98.24	92.14	78.32	43.36	12.88
Start of Water Year <i>09-27-2012</i>	5.30	94.70	87.65	65.30	32.32	9.63
One Year Ago <i>02-02-2012</i>	8.83	91.17	86.16	71.50	45.38	18.63

Intensity:



The Drought Monitor focuses on broad-scale conditions. Local conditions may vary. For more information on the Drought Monitor, go to <https://droughtmonitor.unl.edu/About.aspx>

Author:

Mark Svoboda
 National Drought Mitigation Center

