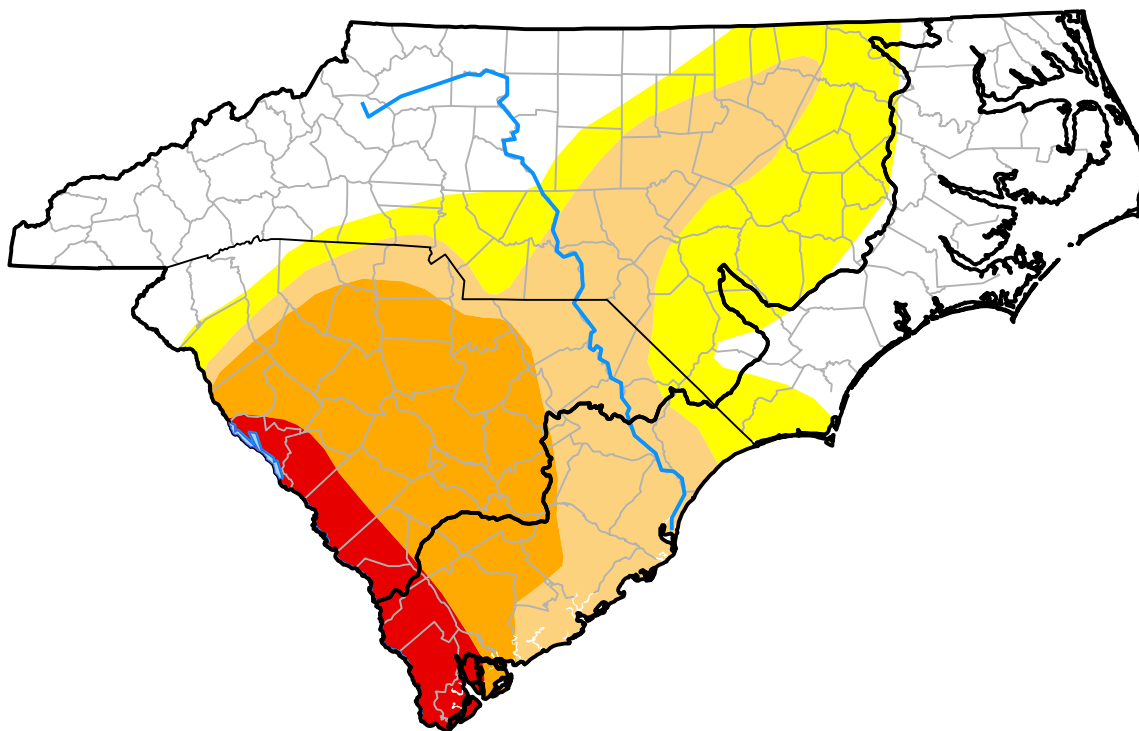


U.S. Drought Monitor

Coastal Carolinas RDEWS

February 12, 2013
(Released Thursday, Feb. 14, 2013)

Valid 7 a.m. EST



Drought Conditions (Percent Area)

	None	D0	D1	D2	D3	D4
Current	53.25	7.23	20.39	12.24	6.88	0.00
Last Week <i>02-07-2013</i>	0.00	60.48	20.39	12.24	6.88	0.00
3 Months Ago <i>11-15-2012</i>	45.88	45.92	7.90	0.30	0.00	0.00
Start of Calendar Year <i>01-03-2013</i>	57.17	27.60	10.07	5.17	0.00	0.00
Start of Water Year <i>09-27-2012</i>	81.76	18.24	0.00	0.00	0.00	0.00
One Year Ago <i>02-16-2012</i>	0.00	15.14	31.24	18.47	17.73	17.43

Intensity:



The Drought Monitor focuses on broad-scale conditions. Local conditions may vary. For more information on the Drought Monitor, go to <https://droughtmonitor.unl.edu/About.aspx>

Author:

Michael Brewer
 NCEI/NOAA



droughtmonitor.unl.edu