

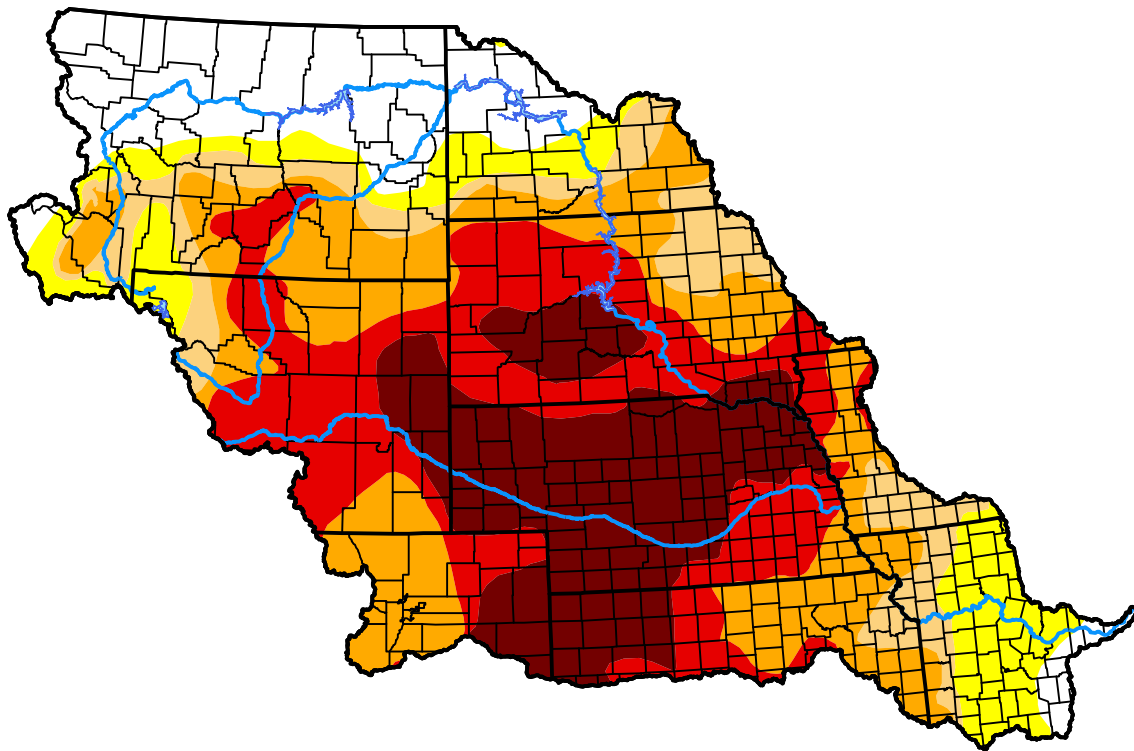
U.S. Drought Monitor

Missouri Watershed

March 12, 2013
 (Released Thursday, Mar. 14, 2013)
 Valid 8 a.m. EDT

Drought Conditions (Percent Area)

	None	D0-D4	D1-D4	D2-D4	D3-D4	D4
Current	15.49	84.51	74.49	64.47	42.29	20.41
Last Week <i>03-07-2013</i>	14.71	85.29	78.67	65.61	42.78	22.02
3 Months Ago <i>12-13-2012</i>	11.68	88.32	81.50	67.55	42.69	22.11
Start of Calendar Year <i>01-03-2013</i>	11.39	88.61	81.97	68.83	45.36	22.11
Start of Water Year <i>09-27-2012</i>	2.82	97.18	91.90	73.35	46.98	18.50
One Year Ago <i>03-15-2012</i>	66.47	33.53	5.12	1.39	0.00	0.00



Intensity:



The Drought Monitor focuses on broad-scale conditions. Local conditions may vary. For more information on the Drought Monitor, go to <https://droughtmonitor.unl.edu/About.aspx>

Author:

Matthew Rosencrans
 CPC/NCEP/NWS/NOAA



droughtmonitor.unl.edu