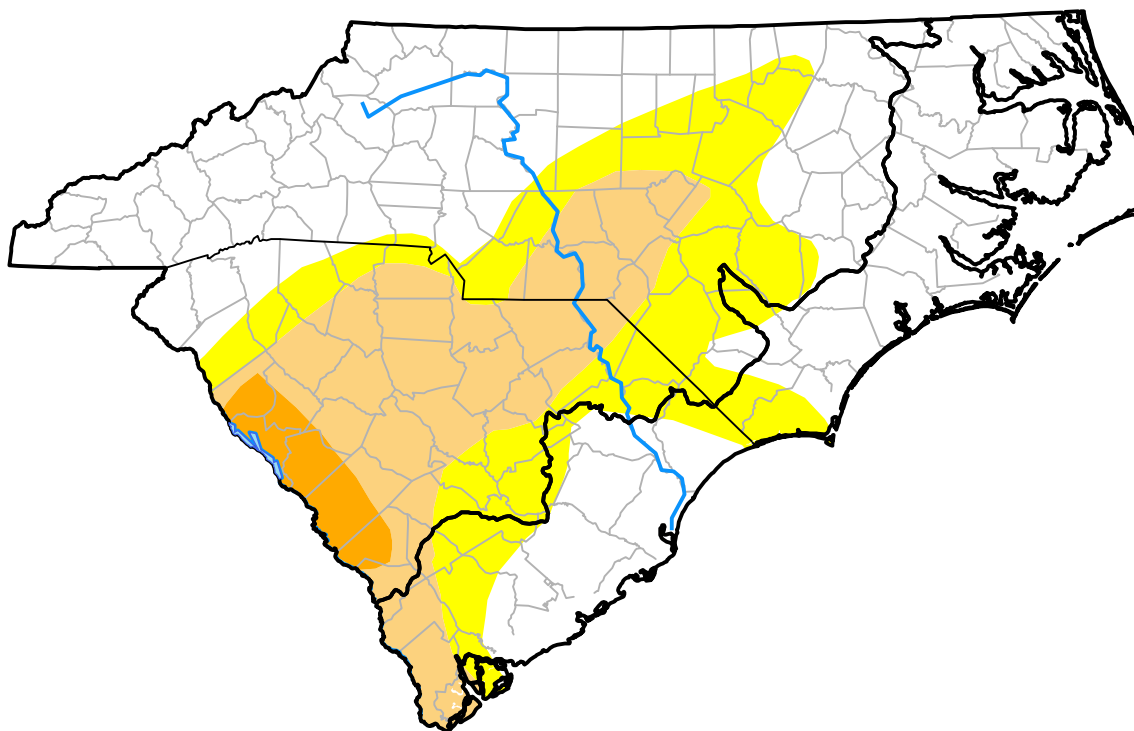


# U.S. Drought Monitor

## Coastal Carolinas RDEWS

**March 12, 2013**  
*(Released Thursday, Mar. 14, 2013)*

Valid 8 a.m. EDT



*Drought Conditions (Percent Area)*

	None	D0	D1	D2	D3	D4
<b>Current</b>	80.65	13.72	5.63	0.00	0.00	0.00
<b>Last Week</b> <i>03-07-2013</i>	75.99	18.38	5.63	0.00	0.00	0.00
<b>3 Months Ago</b> <i>12-13-2012</i>	51.38	33.33	10.12	5.17	0.00	0.00
<b>Start of Calendar Year</b> <i>01-03-2013</i>	57.17	27.60	10.07	5.17	0.00	0.00
<b>Start of Water Year</b> <i>09-27-2012</i>	81.76	18.24	0.00	0.00	0.00	0.00
<b>One Year Ago</b> <i>03-15-2012</i>	0.00	28.15	37.02	17.12	17.70	0.00

Intensity:



*The Drought Monitor focuses on broad-scale conditions. Local conditions may vary. For more information on the Drought Monitor, go to <https://droughtmonitor.unl.edu/About.aspx>*

Author:

Matthew Rosencrans  
 CPC/NCEP/NWS/NOAA



**droughtmonitor.unl.edu**