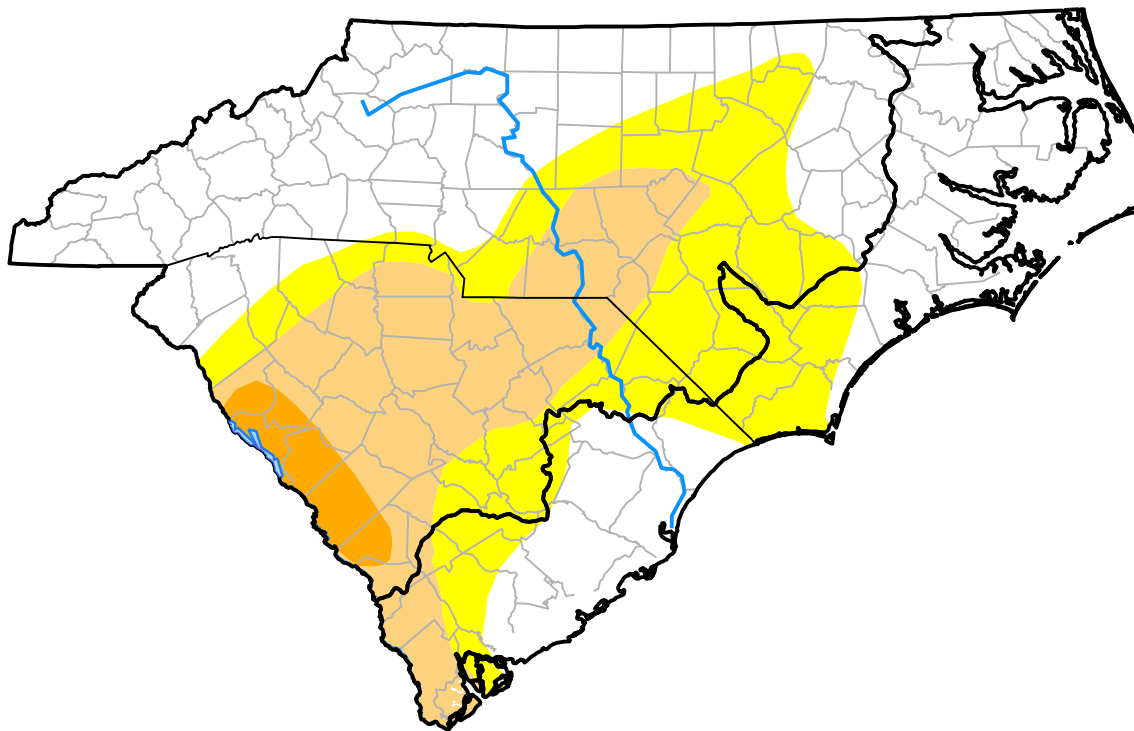


Carolinas RDEWS and Surrounding Areas

(Released Thursday, Mar. 21, 2013)
 10:00 a.m. EDT

Drought Conditions (Percent Area)

	None	D0-D4	D1-D4	D2-D4	D3-D4	D4
Current	51.74	48.26	22.60	3.01	0.00	0.00
Last Week <i>03-14-2013</i>	55.45	44.55	22.60	3.09	0.00	0.00
3 Months Ago <i>12-20-2012</i>	12.11	87.89	67.75	17.18	0.88	0.00
Start of Calendar Year <i>01-03-2013</i>	19.13	80.87	52.07	13.82	0.88	0.00
Start of Water Year <i>09-27-2012</i>	67.06	32.94	4.45	0.00	0.00	0.00
One Year Ago <i>03-22-2012</i>	4.33	95.67	77.52	19.00	7.80	0.00



Intensity:

- None
- D0 Abnormally Dry
- D1 Moderate Drought
- D2 Severe Drought
- D3 Extreme Drought
- D4 Exceptional Drought

The Drought Monitor focuses on broad-scale conditions. Local conditions may vary. For more information on the Drought Monitor, go to <https://droughtmonitor.unl.edu/About.aspx>

Author:

Anthony Artusa
 NOAA/NWS/NCEP/CPC

