

U.S. Drought Monitor

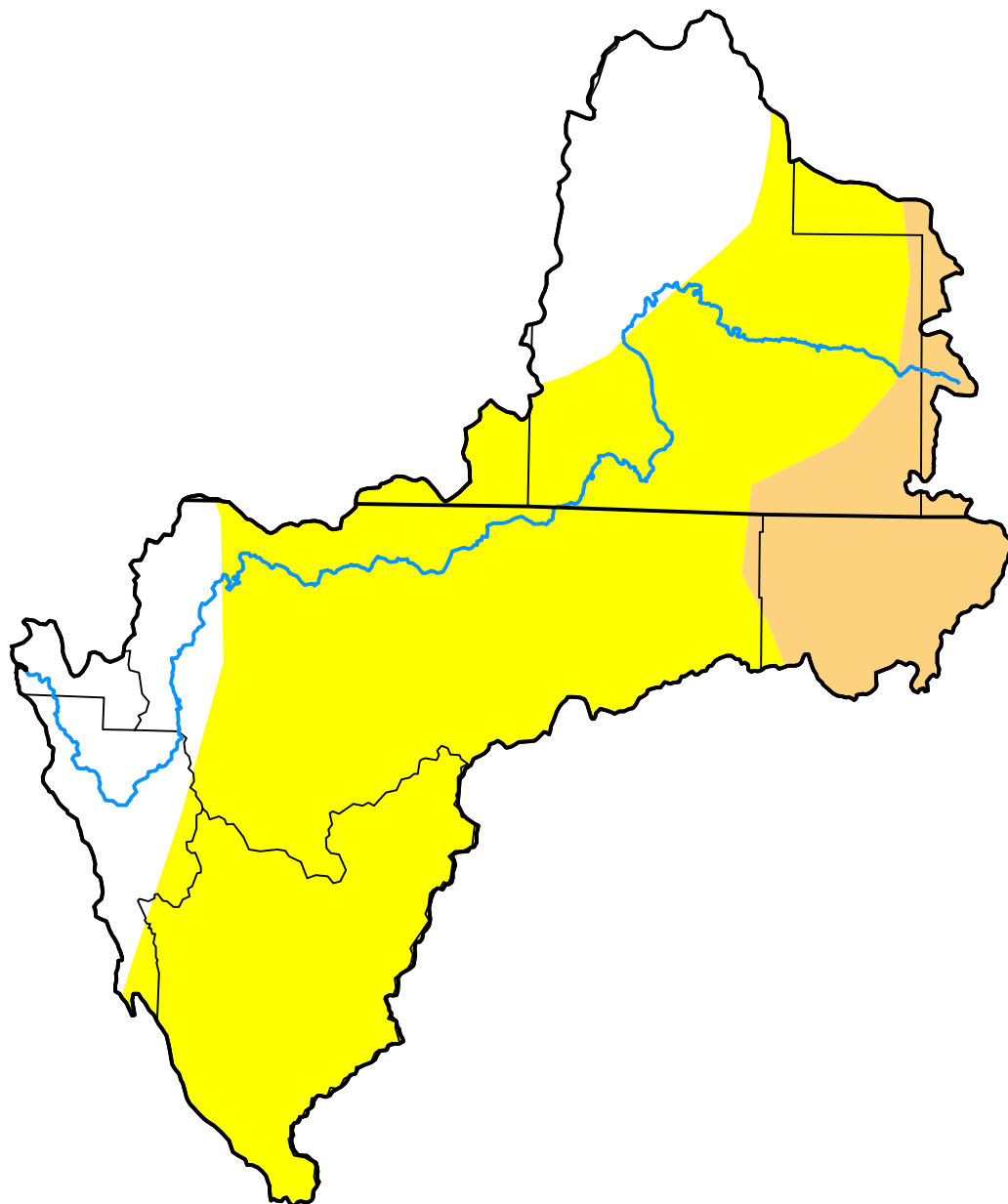
Klamath River Basin

April 16, 2013
 (Released Thursday, Apr. 18, 2013)

Valid 8 a.m. EDT

Drought Conditions (Percent Area)

	None	D0	D1	D2	D3	D4
Current	21.69	65.65	12.66	0.00	0.00	0.00
Last Week <i>04-09-2013</i>	21.69	65.65	12.66	0.00	0.00	0.00
3 Months Ago <i>01-15-2013</i>	60.99	26.04	10.38	2.59	0.00	0.00
Start of Calendar Year <i>01-01-2013</i>	60.82	26.05	10.60	2.52	0.00	0.00
Start of Water Year <i>09-25-2012</i>	47.37	23.71	21.70	7.22	0.00	0.00
One Year Ago <i>04-17-2012</i>	44.02	27.61	20.91	7.45	0.00	0.00



Intensity:

- None
- D0 Abnormally Dry
- D1 Moderate Drought
- D2 Severe Drought
- D3 Extreme Drought
- D4 Exceptional Drought

The Drought Monitor focuses on broad-scale conditions. Local conditions may vary. For more information on the Drought Monitor, go to <https://droughtmonitor.unl.edu/About.aspx>

Author:

David Miskus
 NOAA/NWS/NCEP/CPC



droughtmonitor.unl.edu