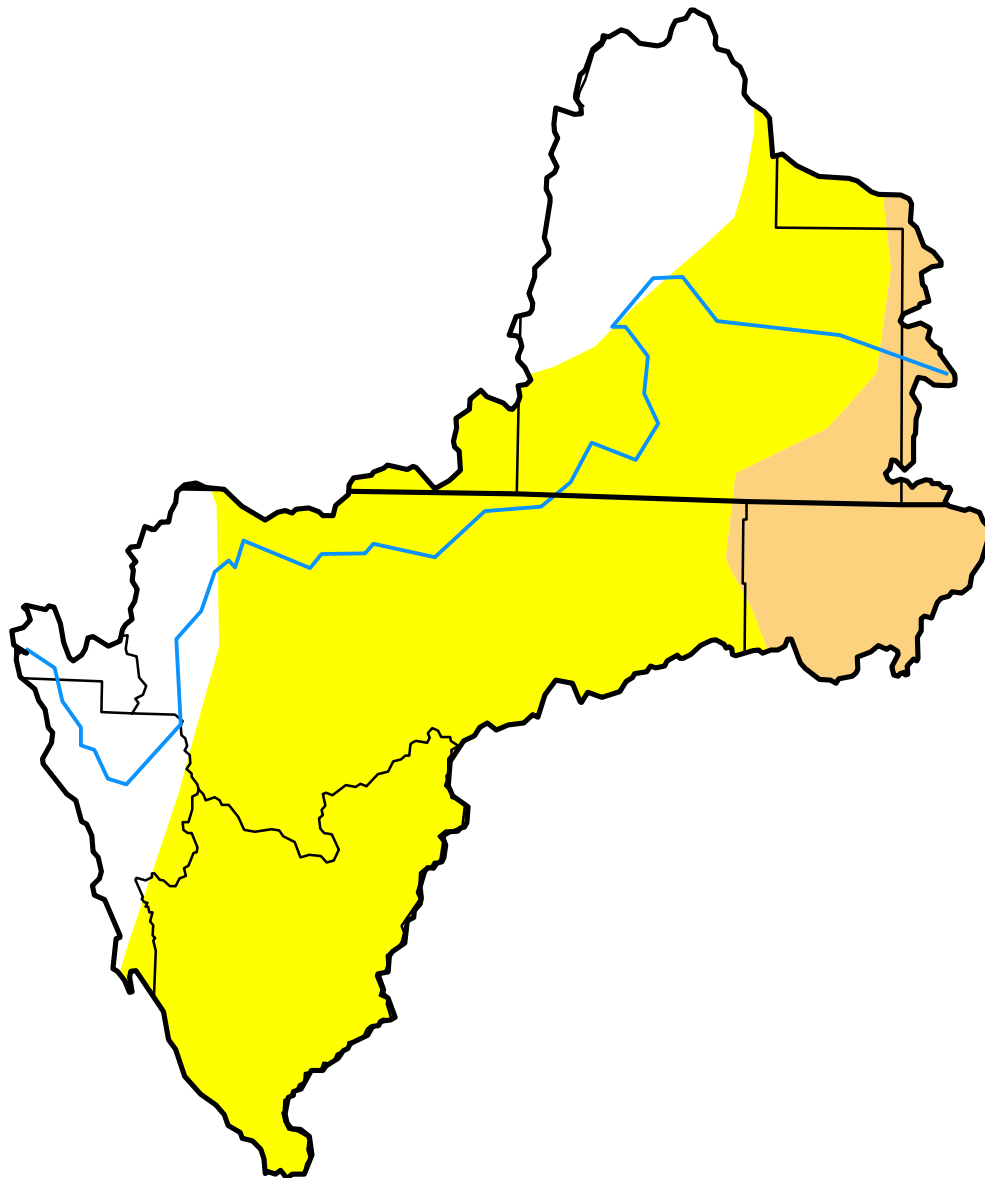







# U.S. Drought Monitor Klamath River Basin

**April 16, 2013**  
(Released Thursday, Apr. 18, 2013)  
Valid 8 a.m. EDT



## Intensity:

-  D0 Abnormally Dry
-  D1 Moderate Drought
-  D2 Severe Drought
-  D3 Extreme Drought
-  D4 Exceptional Drought

*The Drought Monitor focuses on broad-scale conditions. Local conditions may vary. See accompanying text summary for forecast statements.*

## Author:

David Miskus  
NOAA/NWS/NCEP/CPC



<http://droughtmonitor.unl.edu/>