

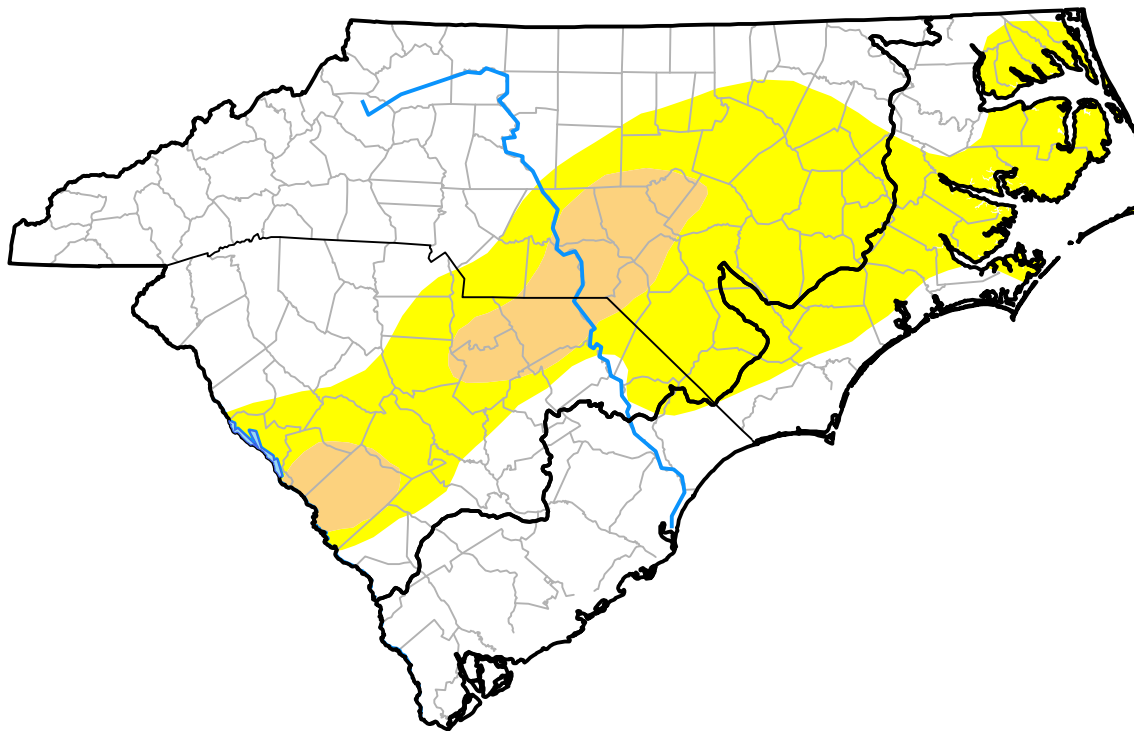
Carolinas RDEWS and Surrounding Areas

(Released Thursday, Apr. 25, 2013)

10:00 a.m. EDT

Drought Conditions (Percent Area)

	None	D0	D1	D2	D3	D4
Current	58.74	33.35	7.91	0.00	0.00	0.00
Last Week <i>04-18-2013</i>	50.90	41.04	8.06	0.00	0.00	0.00
3 Months Ago <i>01-24-2013</i>	29.59	33.64	23.75	12.11	0.90	0.00
Start of Calendar Year <i>01-03-2013</i>	19.13	28.81	38.25	12.93	0.88	0.00
Start of Water Year <i>09-27-2012</i>	67.06	28.49	4.45	0.00	0.00	0.00
One Year Ago <i>04-26-2012</i>	8.27	23.47	40.87	13.79	13.05	0.54



Intensity:

- None
- D0 Abnormally Dry
- D1 Moderate Drought
- D2 Severe Drought
- D3 Extreme Drought
- D4 Exceptional Drought

The Drought Monitor focuses on broad-scale conditions. Local conditions may vary. For more information on the Drought Monitor, go to <https://droughtmonitor.unl.edu/About.aspx>

Author:

Eric Luebehusen
U.S. Department of Agriculture

