

U.S. Drought Monitor

Arkansas-White-Red Watershed

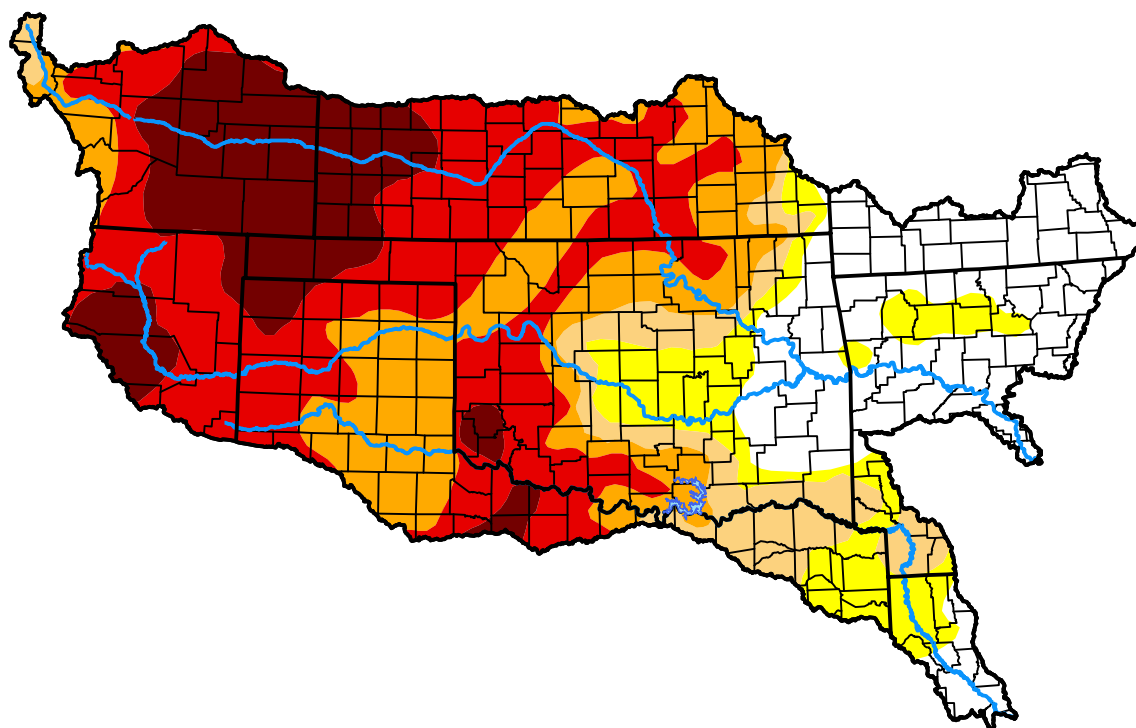
April 30, 2013

(Released Thursday, May. 2, 2013)

Valid 8 a.m. EDT

Drought Conditions (Percent Area)

	None	D0-D4	D1-D4	D2-D4	D3-D4	D4
Current	19.24	80.76	71.15	62.91	44.35	15.70
Last Week 04-25-2013	12.23	87.77	73.28	62.24	42.78	12.86
3 Months Ago 01-31-2013	3.16	96.84	92.93	85.42	68.58	24.80
Start of Calendar Year 01-03-2013	2.70	97.30	95.76	90.40	77.11	26.21
Start of Water Year 09-27-2012	1.37	98.63	97.75	92.40	71.23	28.23
One Year Ago 05-03-2012	52.31	47.69	33.84	17.22	3.89	0.45



Intensity:

None	D2 Severe Drought
D0 Abnormally Dry	D3 Extreme Drought
D1 Moderate Drought	D4 Exceptional Drought

The Drought Monitor focuses on broad-scale conditions. Local conditions may vary. For more information on the Drought Monitor, go to <https://droughtmonitor.unl.edu/About.aspx>

Author:

Eric Luebehusen
U.S. Department of Agriculture



droughtmonitor.unl.edu