

U.S. Drought Monitor

Intermountain West DEWS and Surrounding Areas

April 30, 2013

(Released Thursday, May. 2, 2013)

Valid 8 a.m. EDT

Drought Conditions (Percent Area)

	None	D0	D1	D2	D3	D4
Current	0.00	5.37	21.00	50.88	16.85	5.89
Last Week <i>04-23-2013</i>	0.65	5.47	22.76	45.29	22.04	3.79
3 Months Ago <i>01-29-2013</i>	0.00	3.64	23.63	40.52	26.91	5.30
Start of Calendar Year <i>01-01-2013</i>	0.00	1.34	25.43	38.62	29.31	5.30
Start of Water Year <i>09-25-2012</i>	0.00	0.42	30.54	36.89	27.73	4.41
One Year Ago <i>05-01-2012</i>	14.40	21.34	31.61	28.57	4.08	0.00

(Statistics for area highlighted in green)

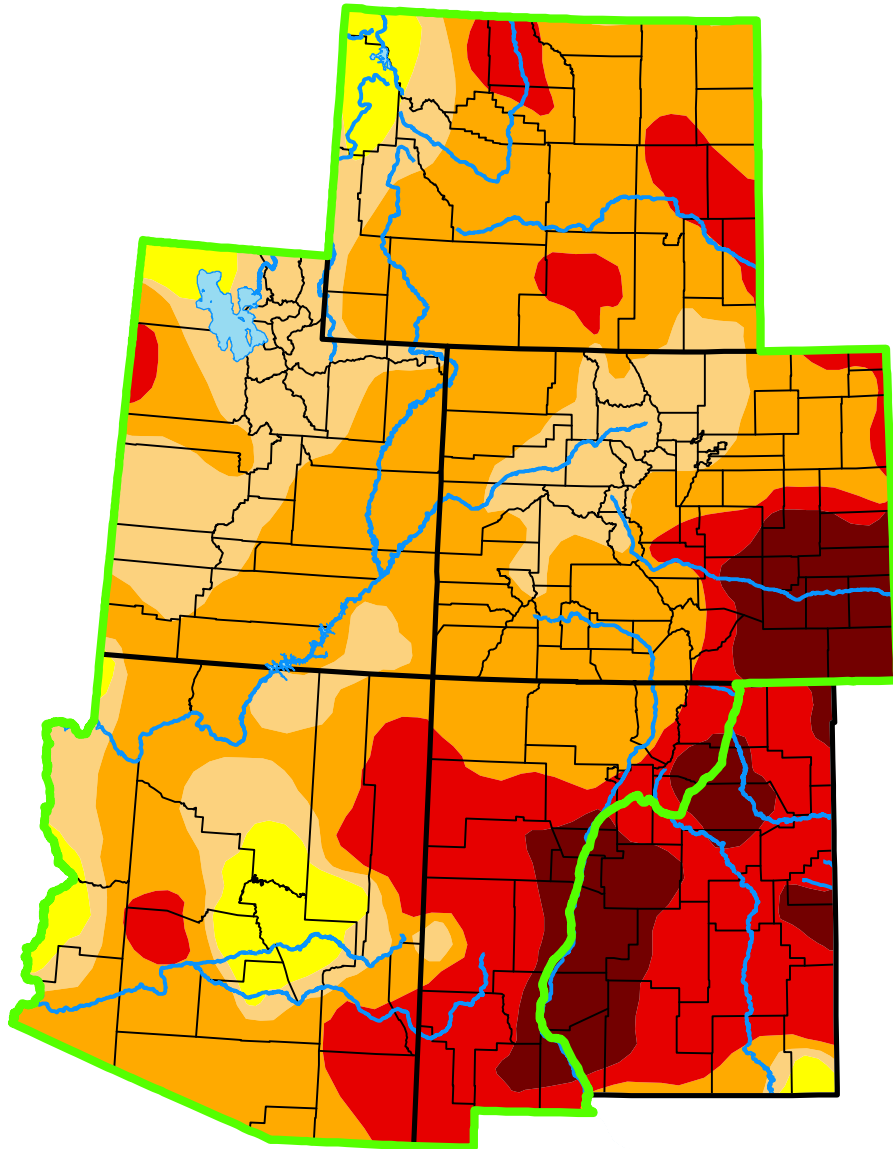
Intensity:

 None	 D2 Severe Drought
 D0 Abnormally Dry	 D3 Extreme Drought
 D1 Moderate Drought	 D4 Exceptional Drought

The Drought Monitor focuses on broad-scale conditions. Local conditions may vary. For more information on the Drought Monitor, go to <https://droughtmonitor.unl.edu/About.aspx>

Author:

Eric Luebehusen
U.S. Department of Agriculture



droughtmonitor.unl.edu