

U.S. Drought Monitor

Upper Colorado Watershed

July 30, 2013

(Released Thursday, Aug. 1, 2013)

Valid 8 a.m. EDT

Drought Conditions (Percent Area)

	None	D0-D4	D1-D4	D2-D4	D3-D4	D4
Current	0.00	100.00	99.81	82.08	33.12	0.01
Last Week 07-25-2013	0.00	100.00	99.81	81.16	31.54	0.01
3 Months Ago 05-02-2013	0.00	100.00	100.00	78.19	3.78	0.00
Start of Calendar Year 01-03-2013	0.00	100.00	100.00	96.05	42.38	0.36
Start of Water Year 09-27-2012	0.00	100.00	100.00	96.85	46.37	0.00
One Year Ago 08-02-2012	0.00	100.00	99.44	93.52	60.06	0.00

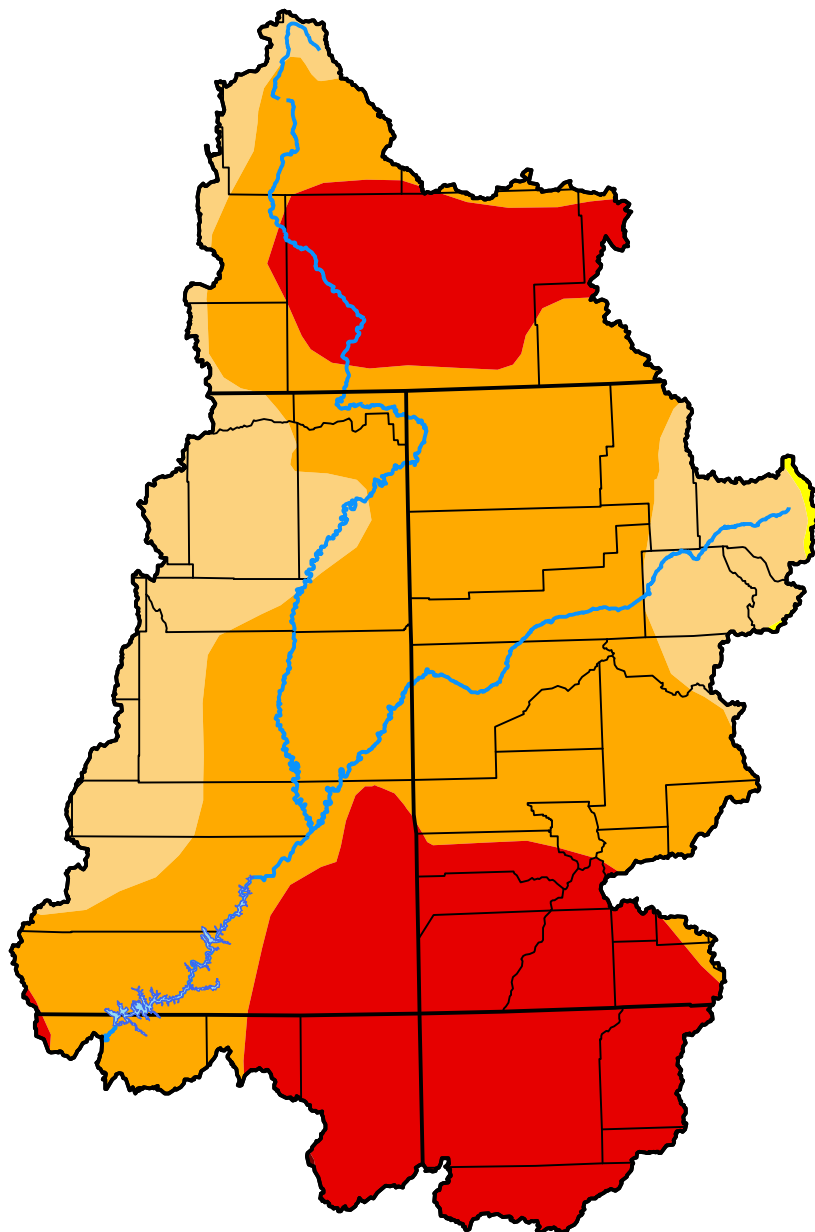
Intensity:

 None	 D2 Severe Drought
 D0 Abnormally Dry	 D3 Extreme Drought
 D1 Moderate Drought	 D4 Exceptional Drought

The Drought Monitor focuses on broad-scale conditions. Local conditions may vary. For more information on the Drought Monitor, go to <https://droughtmonitor.unl.edu/About.aspx>

Author:

Brian Fuchs
National Drought Mitigation Center



droughtmonitor.unl.edu