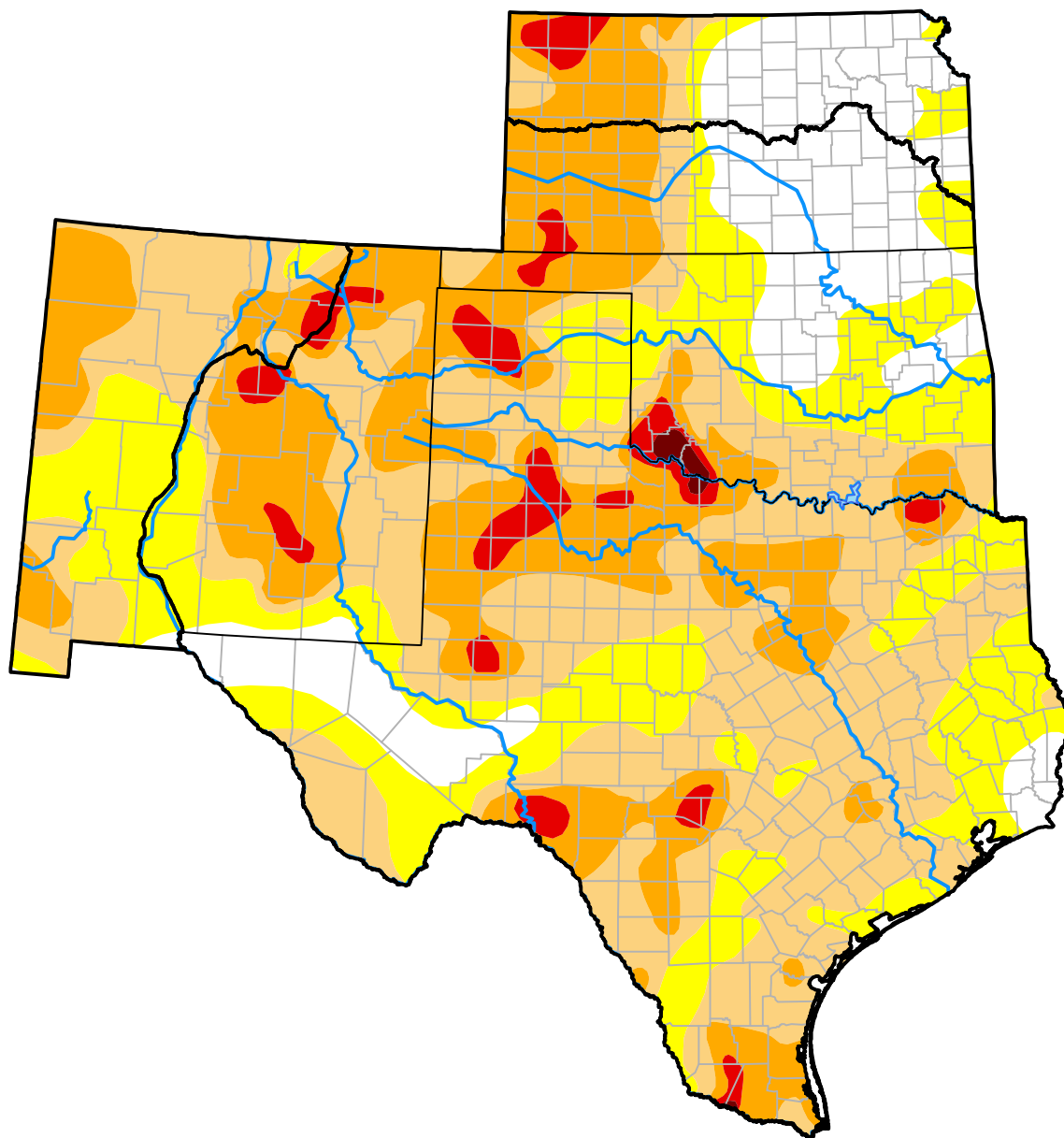


# U.S. Drought Monitor

## Southern Plains RDEWS

**October 8, 2013**  
*(Released Thursday, Oct. 10, 2013)*  
 Valid 8 a.m. EDT



*Drought Conditions (Percent Area)*

	None	D0-D4	D1-D4	D2-D4	D3-D4	D4
<b>Current</b>	7.75	92.25	67.43	27.60	4.14	0.29
<b>Last Week</b> <i>10-03-2013</i>	7.61	92.39	67.73	27.33	3.90	0.29
<b>3 Months Ago</b> <i>07-11-2013</i>	4.09	95.91	87.67	75.67	48.99	19.71
<b>Start of Calendar Year</b> <i>01-03-2013</i>	1.76	98.24	92.14	78.32	43.36	12.88
<b>Start of Water Year</b> <i>10-03-2013</i>	7.61	92.39	67.73	27.33	3.90	0.29
<b>One Year Ago</b> <i>10-11-2012</i>	9.58	90.42	79.86	50.33	24.82	6.73

### Intensity:

None	D2 Severe Drought
D0 Abnormally Dry	D3 Extreme Drought
D1 Moderate Drought	D4 Exceptional Drought

*The Drought Monitor focuses on broad-scale conditions. Local conditions may vary. For more information on the Drought Monitor, go to <https://droughtmonitor.unl.edu/About.aspx>*

### Author:

Richard Tinker  
 CPC/NOAA/NWS/NCEP



**droughtmonitor.unl.edu**