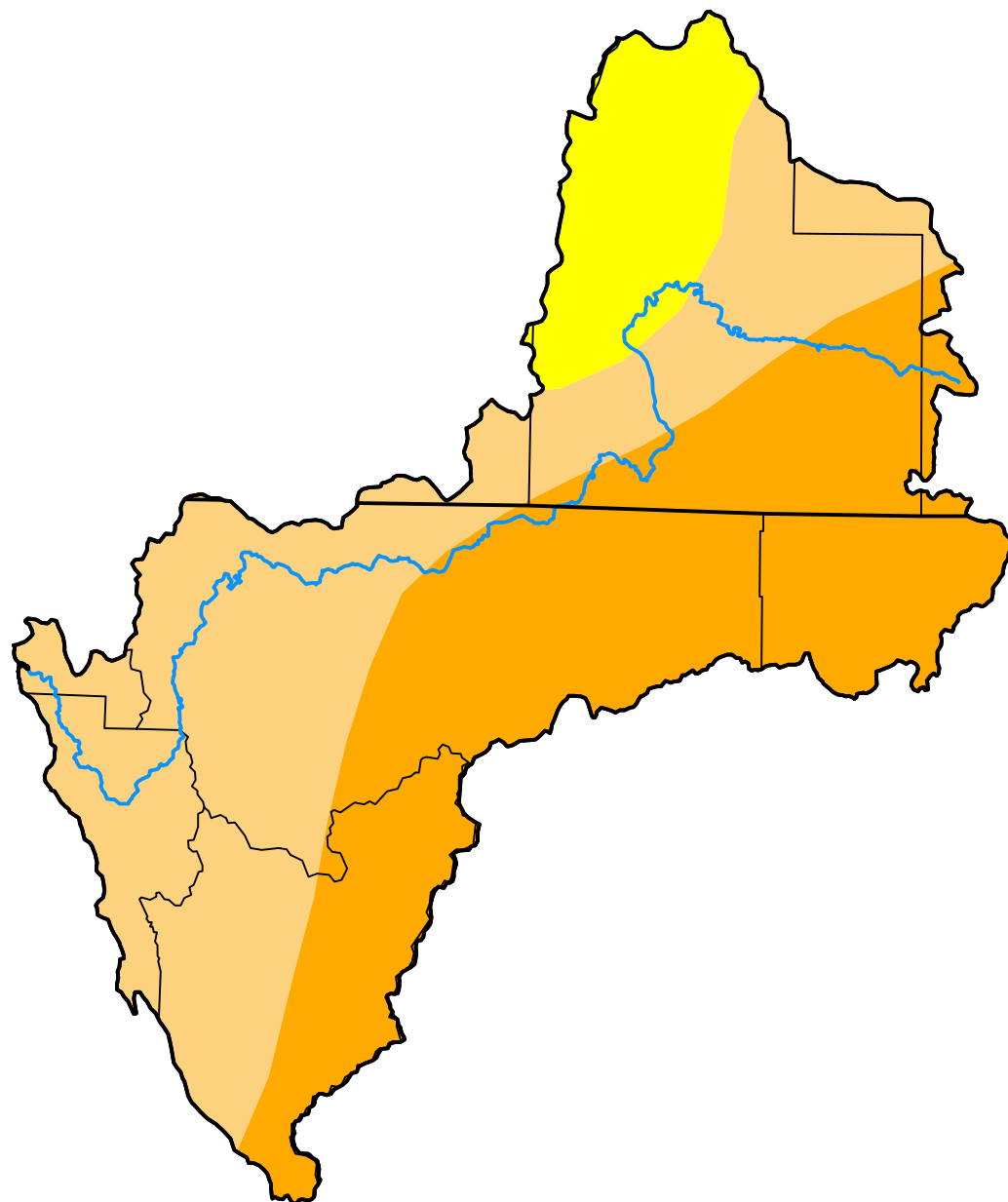


U.S. Drought Monitor Klamath River Basin

October 15, 2013
(Released Thursday, Oct. 17, 2013)
Valid 8 a.m. EDT



Drought Conditions (Percent Area)

	None	D0-D4	D1-D4	D2-D4	D3-D4	D4
Current	0.00	100.00	89.01	44.88	0.00	0.00
Last Week <i>10-08-2013</i>	0.00	100.00	89.13	44.88	0.00	0.00
3 Months Ago <i>07-16-2013</i>	0.00	100.00	100.00	88.33	0.00	0.00
Start of Calendar Year <i>01-01-2013</i>	60.82	39.18	13.13	2.52	0.00	0.00
Start of Water Year <i>10-01-2013</i>	0.00	100.00	89.13	44.88	0.00	0.00
One Year Ago <i>10-16-2012</i>	18.40	81.60	27.20	6.38	0.00	0.00

Intensity:

None	D2 Severe Drought
D0 Abnormally Dry	D3 Extreme Drought
D1 Moderate Drought	D4 Exceptional Drought

The Drought Monitor focuses on broad-scale conditions. Local conditions may vary. For more information on the Drought Monitor, go to <https://droughtmonitor.unl.edu/About.aspx>

Author:

Richard Tinker
CPC/NOAA/NWS/NCEP



droughtmonitor.unl.edu