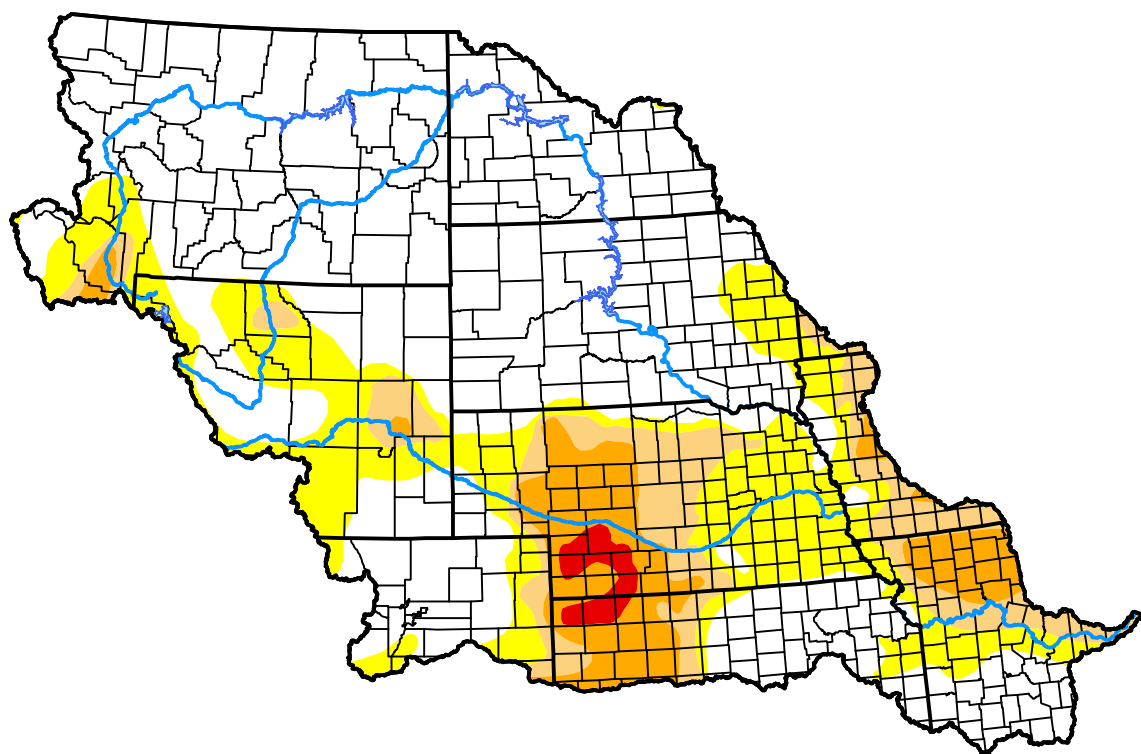


U.S. Drought Monitor Missouri Watershed

October 22, 2013
(Released Thursday, Oct. 24, 2013)
Valid 8 a.m. EDT



Drought Conditions (Percent Area)

	None	D0-D4	D1-D4	D2-D4	D3-D4	D4
Current	62.36	37.64	17.83	8.70	1.06	0.00
Last Week 10-17-2013	59.96	40.04	20.47	9.33	1.19	0.00
3 Months Ago 07-25-2013	31.59	68.41	45.80	26.68	11.71	2.85
Start of Calendar Year 01-03-2013	11.39	88.61	81.97	68.83	45.36	22.11
Start of Water Year 10-03-2013	45.62	54.38	33.41	13.77	1.69	0.00
One Year Ago 10-25-2012	1.20	98.80	91.78	74.11	46.63	22.76

Intensity:

None	D2 Severe Drought
D0 Abnormally Dry	D3 Extreme Drought
D1 Moderate Drought	D4 Exceptional Drought

The Drought Monitor focuses on broad-scale conditions. Local conditions may vary. For more information on the Drought Monitor, go to <https://droughtmonitor.unl.edu/About.aspx>

Author:

Brian Fuchs
National Drought Mitigation Center



droughtmonitor.unl.edu