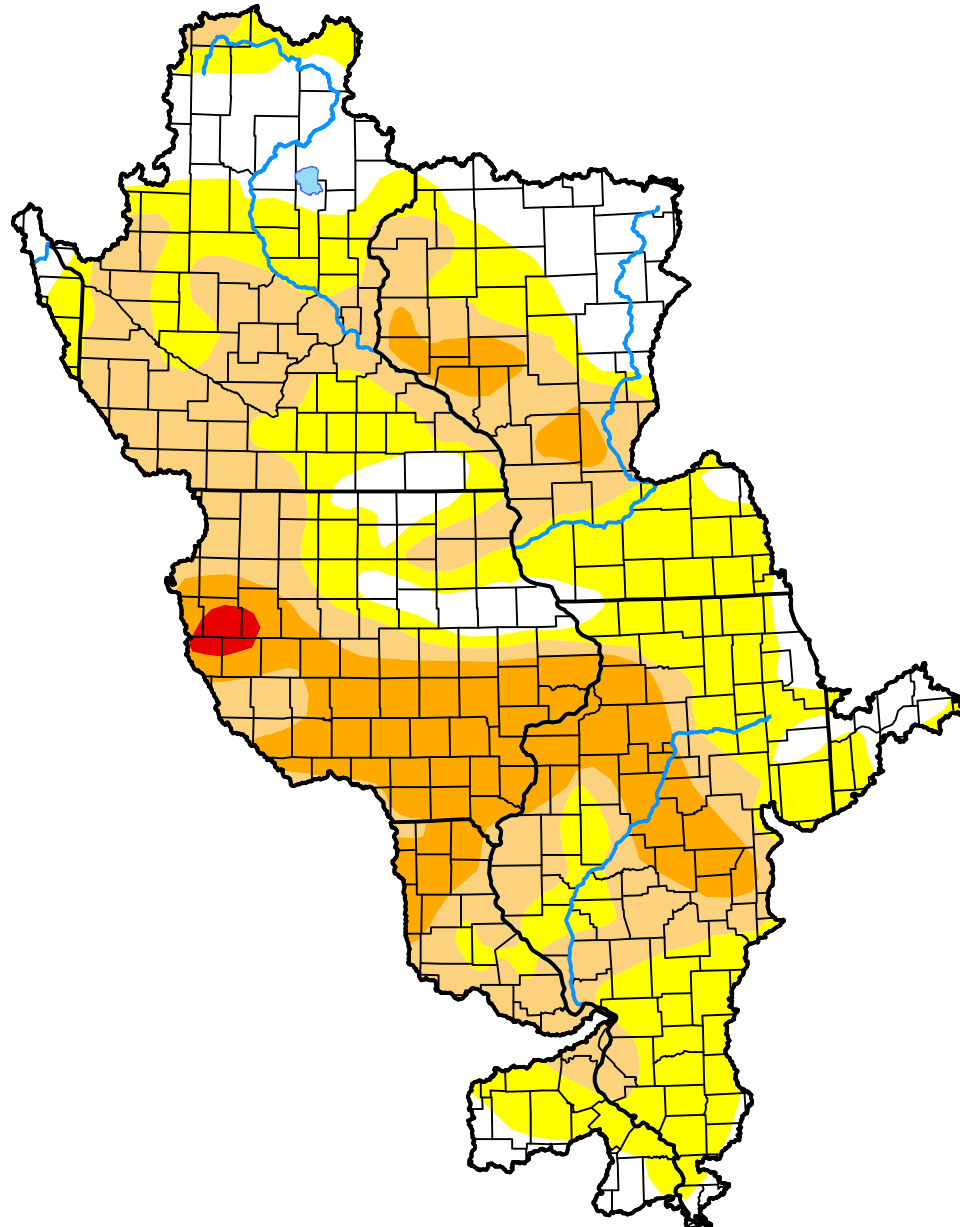


U.S. Drought Monitor

Upper Mississippi Watershed

October 29, 2013
 (Released Thursday, Oct. 31, 2013)
 Valid 8 a.m. EDT



Drought Conditions (Percent Area)

	None	D0-D4	D1-D4	D2-D4	D3-D4	D4
Current	18.22	81.78	48.02	17.54	0.52	0.00
Last Week <i>10-24-2013</i>	18.21	81.79	48.02	17.54	0.52	0.00
3 Months Ago <i>08-01-2013</i>	77.95	22.05	0.05	0.00	0.00	0.00
Start of Calendar Year <i>01-03-2013</i>	4.47	95.53	81.77	45.32	13.61	0.00
Start of Water Year <i>10-03-2013</i>	12.80	87.20	62.28	25.10	0.52	0.00
One Year Ago <i>11-01-2012</i>	2.38	97.62	82.15	45.51	18.05	0.00

Intensity:

- None
- D0 Abnormally Dry
- D1 Moderate Drought
- D2 Severe Drought
- D3 Extreme Drought
- D4 Exceptional Drought

The Drought Monitor focuses on broad-scale conditions. Local conditions may vary. For more information on the Drought Monitor, go to <https://droughtmonitor.unl.edu/About.aspx>

Author:

Brian Fuchs
 National Drought Mitigation Center



droughtmonitor.unl.edu