

U.S. Drought Monitor

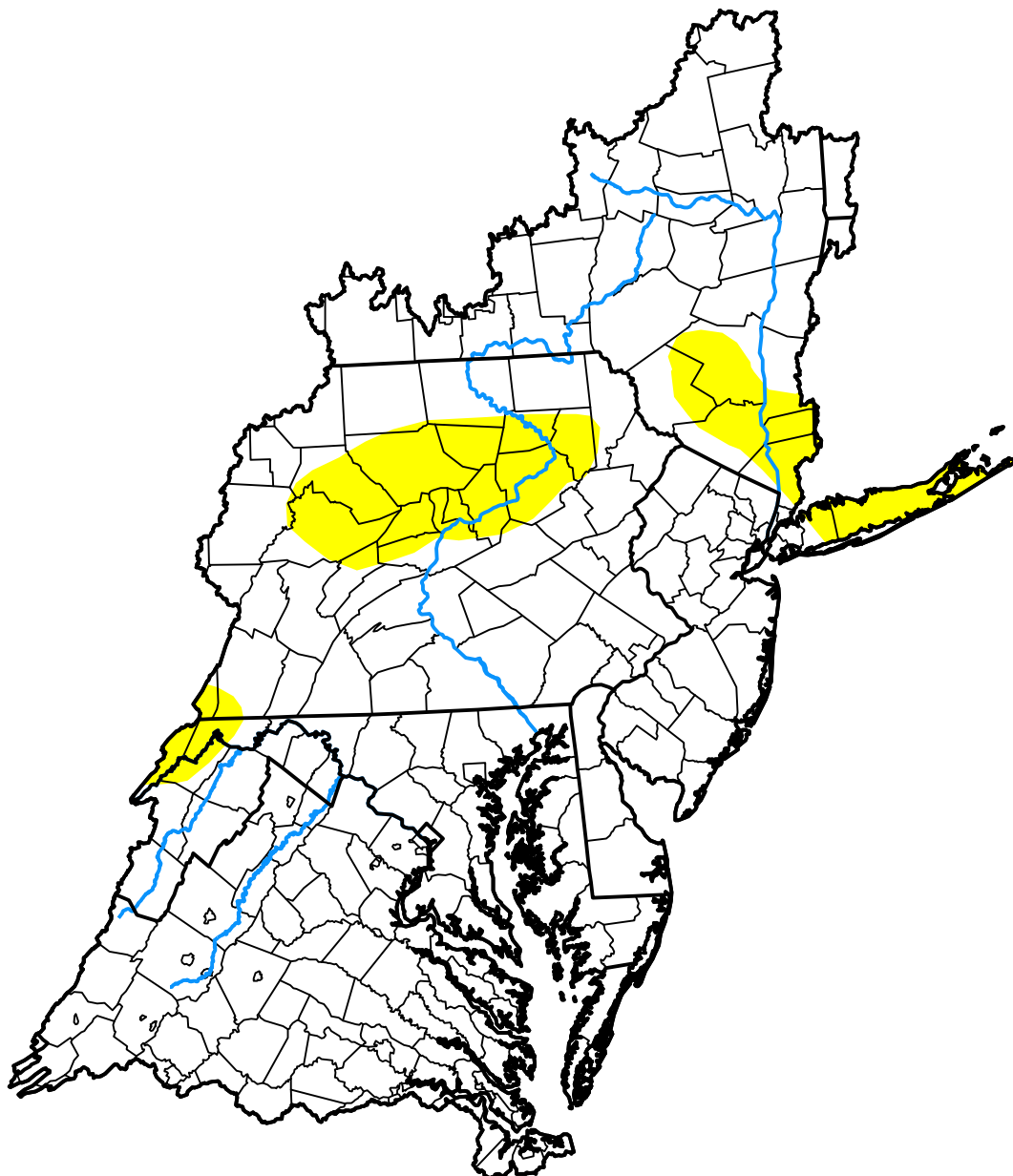
Mid Atlantic Watershed

January 21, 2014
(Released Thursday, Jan. 23, 2014)

Valid 7 a.m. EST

Drought Conditions (Percent Area)

	None	D0	D1	D2	D3	D4
Current	88.52	11.48	0.00	0.00	0.00	0.00
Last Week <i>01-16-2014</i>	86.02	12.81	1.16	0.00	0.00	0.00
3 Months Ago <i>10-24-2013</i>	80.80	18.16	1.04	0.00	0.00	0.00
Start of Calendar Year <i>01-02-2014</i>	66.01	26.82	7.17	0.00	0.00	0.00
Start of Water Year <i>10-03-2013</i>	64.95	35.05	0.00	0.00	0.00	0.00
One Year Ago <i>01-24-2013</i>	90.23	4.45	5.32	0.00	0.00	0.00



Intensity:

- None
- D0 Abnormally Dry
- D1 Moderate Drought
- D2 Severe Drought
- D3 Extreme Drought
- D4 Exceptional Drought

The Drought Monitor focuses on broad-scale conditions. Local conditions may vary. For more information on the Drought Monitor, go to <https://droughtmonitor.unl.edu/About.aspx>

Author:

Richard Tinker
CPC/NOAA/NWS/NCEP

