

# U.S. Drought Monitor

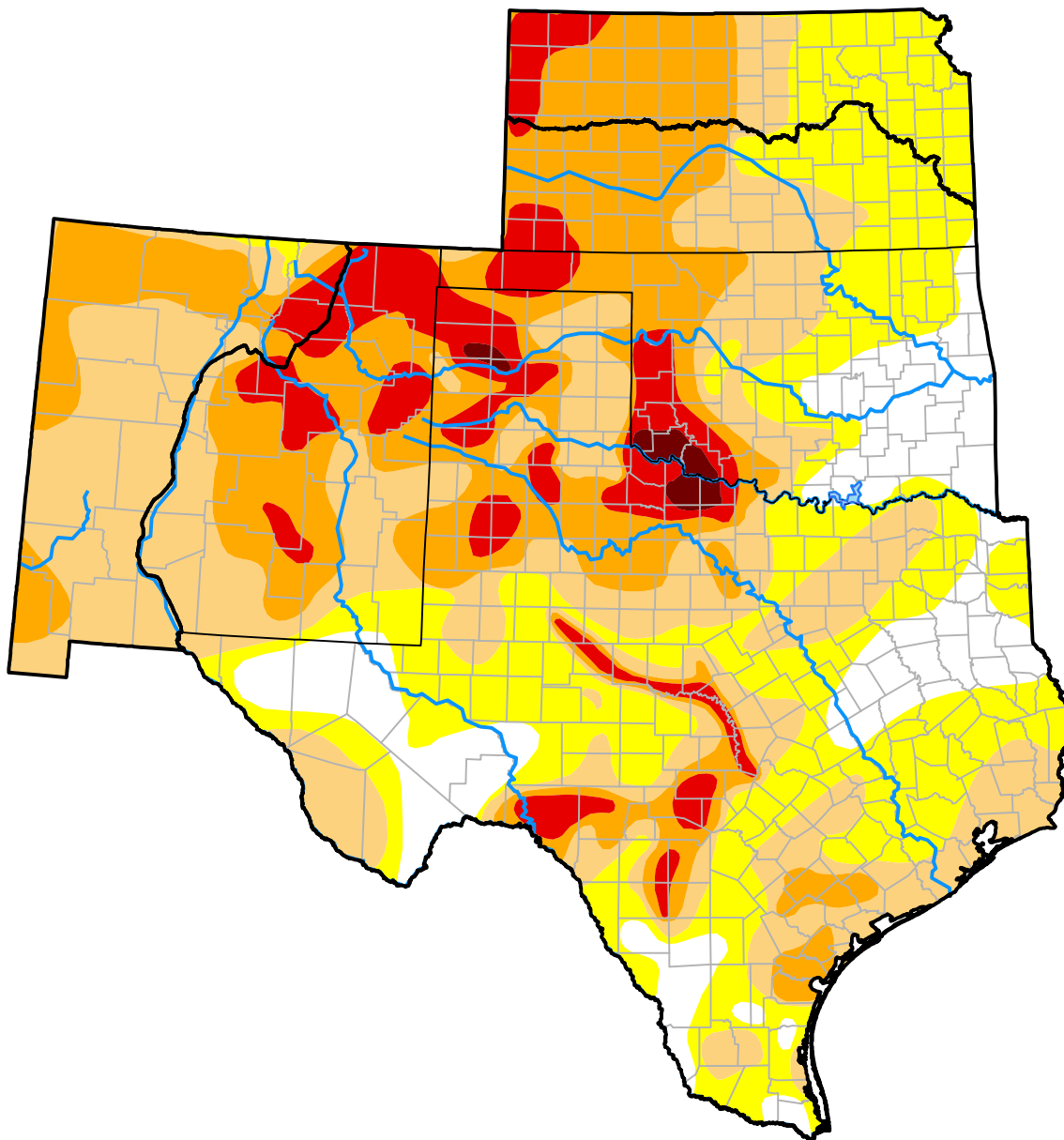
## Southern Plains RDEWS

**February 4, 2014**  
 (Released Thursday, Feb. 6, 2014)

Valid 7 a.m. EST

*Drought Conditions (Percent Area)*

	None	D0	D1	D2	D3	D4
<b>Current</b>	13.35	23.91	32.46	20.29	9.21	0.78
<b>Last Week</b> <i>01-30-2014</i>	15.88	22.71	30.99	21.29	8.31	0.82
<b>3 Months Ago</b> <i>11-07-2013</i>	19.42	26.90	27.69	21.25	4.14	0.60
<b>Start of Calendar Year</b> <i>01-02-2014</i>	24.42	24.25	27.44	18.72	4.35	0.82
<b>Start of Water Year</b> <i>10-03-2013</i>	7.61	24.66	40.40	23.42	3.61	0.29
<b>One Year Ago</b> <i>02-07-2013</i>	5.58	8.04	15.85	36.28	23.41	10.84



Intensity:

- None
- D0 Abnormally Dry
- D1 Moderate Drought
- D2 Severe Drought
- D3 Extreme Drought
- D4 Exceptional Drought

*The Drought Monitor focuses on broad-scale conditions. Local conditions may vary. For more information on the Drought Monitor, go to <https://droughtmonitor.unl.edu/About.aspx>*

Author:

Anthony Artusa  
 NOAA/NWS/NCEP/CPC



[droughtmonitor.unl.edu](https://droughtmonitor.unl.edu)