

# U.S. Drought Monitor

# Arkansas-White-Red Watershed

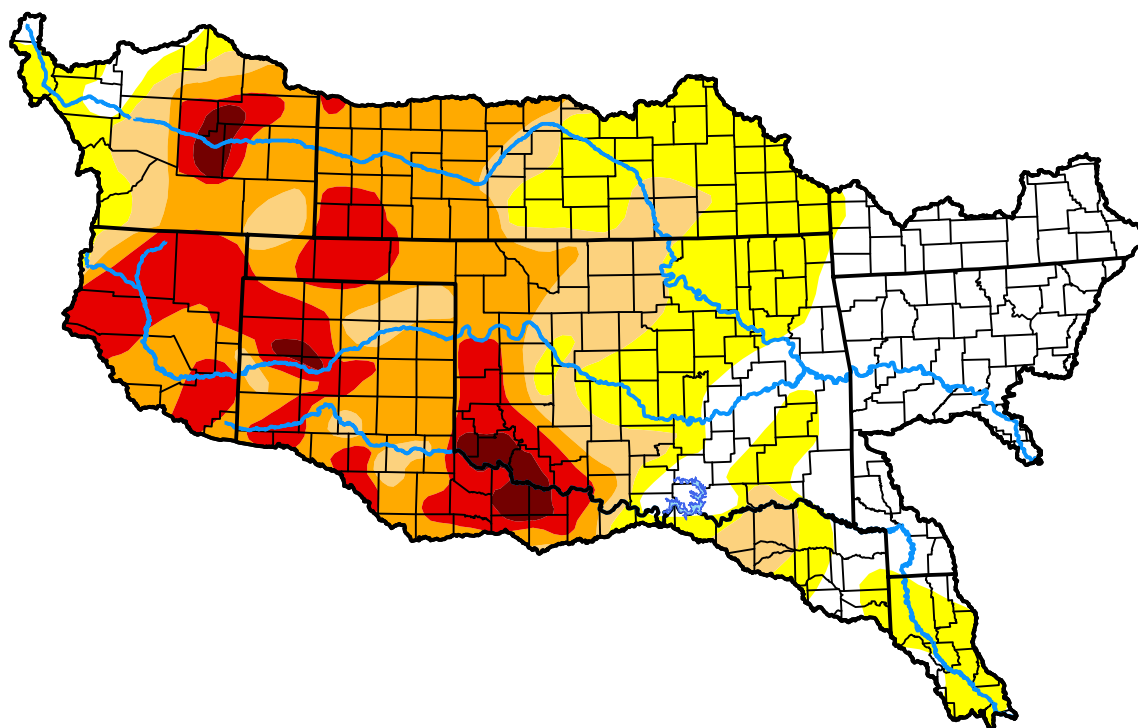
## February 18, 2014

(Released Thursday, Feb. 20, 2014)

Valid 7 a.m. EST

### Drought Conditions (Percent Area)

	None	D0-D4	D1-D4	D2-D4	D3-D4	D4
<b>Current</b>	24.27	75.73	52.39	38.72	15.76	2.06
<b>Last Week</b> <i>02-13-2014</i>	27.01	72.99	52.51	36.18	15.63	2.06
<b>3 Months Ago</b> <i>11-21-2013</i>	32.78	67.22	43.36	28.04	8.78	2.07
<b>Start of Calendar Year</b> <i>01-02-2014</i>	37.58	62.42	45.78	29.18	8.69	2.14
<b>Start of Water Year</b> <i>10-03-2013</i>	26.96	73.04	50.82	28.17	5.88	1.13
<b>One Year Ago</b> <i>02-21-2013</i>	6.61	93.39	89.11	81.92	64.38	26.73



### Intensity:



The Drought Monitor focuses on broad-scale conditions. Local conditions may vary. For more information on the Drought Monitor, go to <https://droughtmonitor.unl.edu/About.aspx>

### Author:

David Miskus  
NOAA/NWS/NCEP/CPC



[droughtmonitor.unl.edu](https://droughtmonitor.unl.edu)