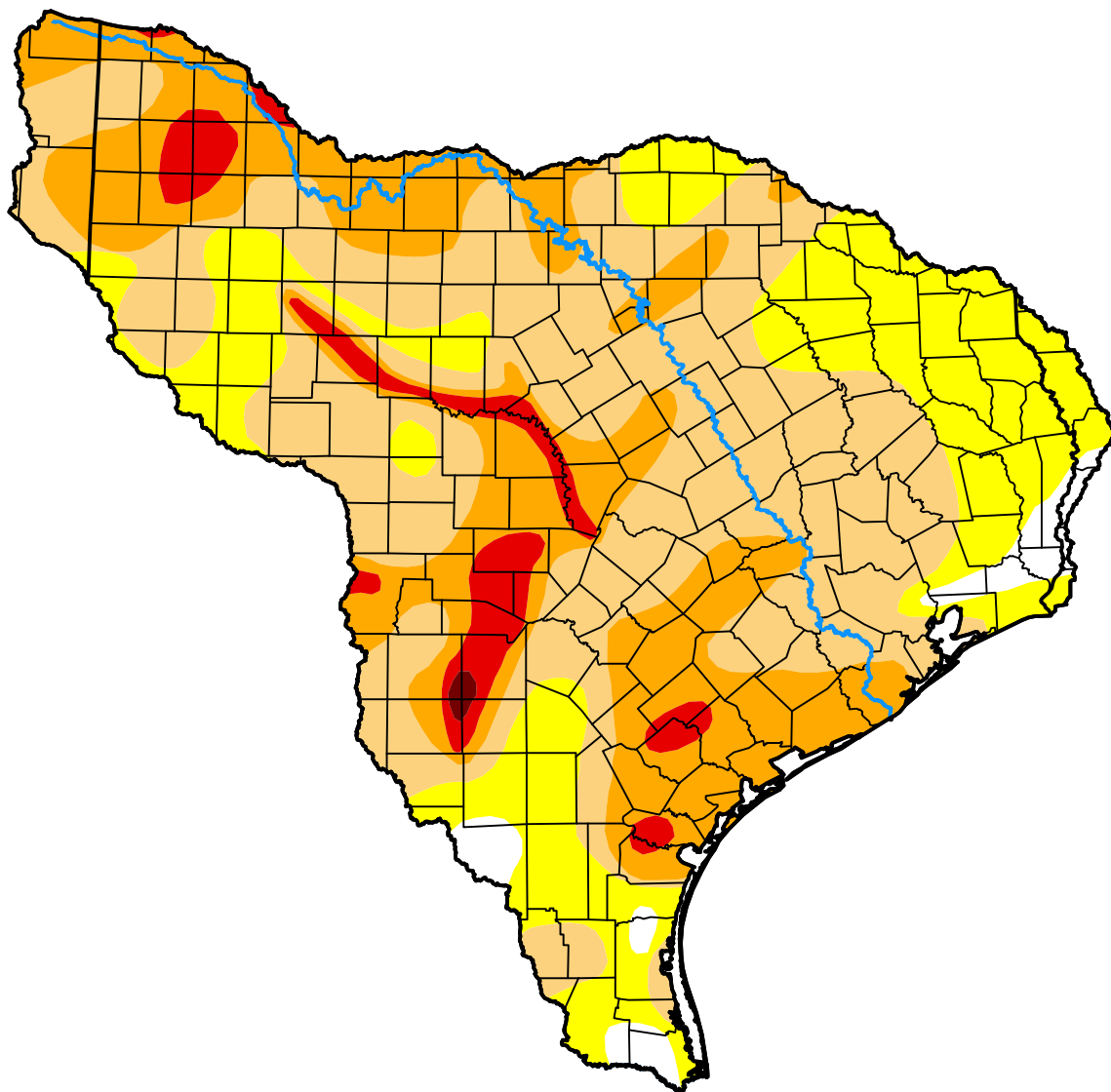


U.S. Drought Monitor Texas-Gulf Watershed

February 25, 2014
(Released Thursday, Feb. 27, 2014)
Valid 7 a.m. EST



Drought Conditions (Percent Area)

	None	D0-D4	D1-D4	D2-D4	D3-D4	D4
Current	2.72	97.28	73.36	30.79	5.18	0.18
Last Week <i>02-20-2014</i>	5.80	94.20	61.08	23.76	4.31	0.00
3 Months Ago <i>11-27-2013</i>	26.03	73.97	46.00	19.73	2.12	0.00
Start of Calendar Year <i>01-02-2014</i>	30.45	69.55	43.04	19.20	1.73	0.00
Start of Water Year <i>10-03-2013</i>	2.31	97.69	76.84	24.27	2.48	0.01
One Year Ago <i>02-28-2013</i>	11.24	88.76	75.57	52.47	23.95	5.94

Intensity:

None	D2 Severe Drought
D0 Abnormally Dry	D3 Extreme Drought
D1 Moderate Drought	D4 Exceptional Drought

The Drought Monitor focuses on broad-scale conditions. Local conditions may vary. For more information on the Drought Monitor, go to <https://droughtmonitor.unl.edu/About.aspx>

Author:

Brad Rippey
U.S. Department of Agriculture



droughtmonitor.unl.edu