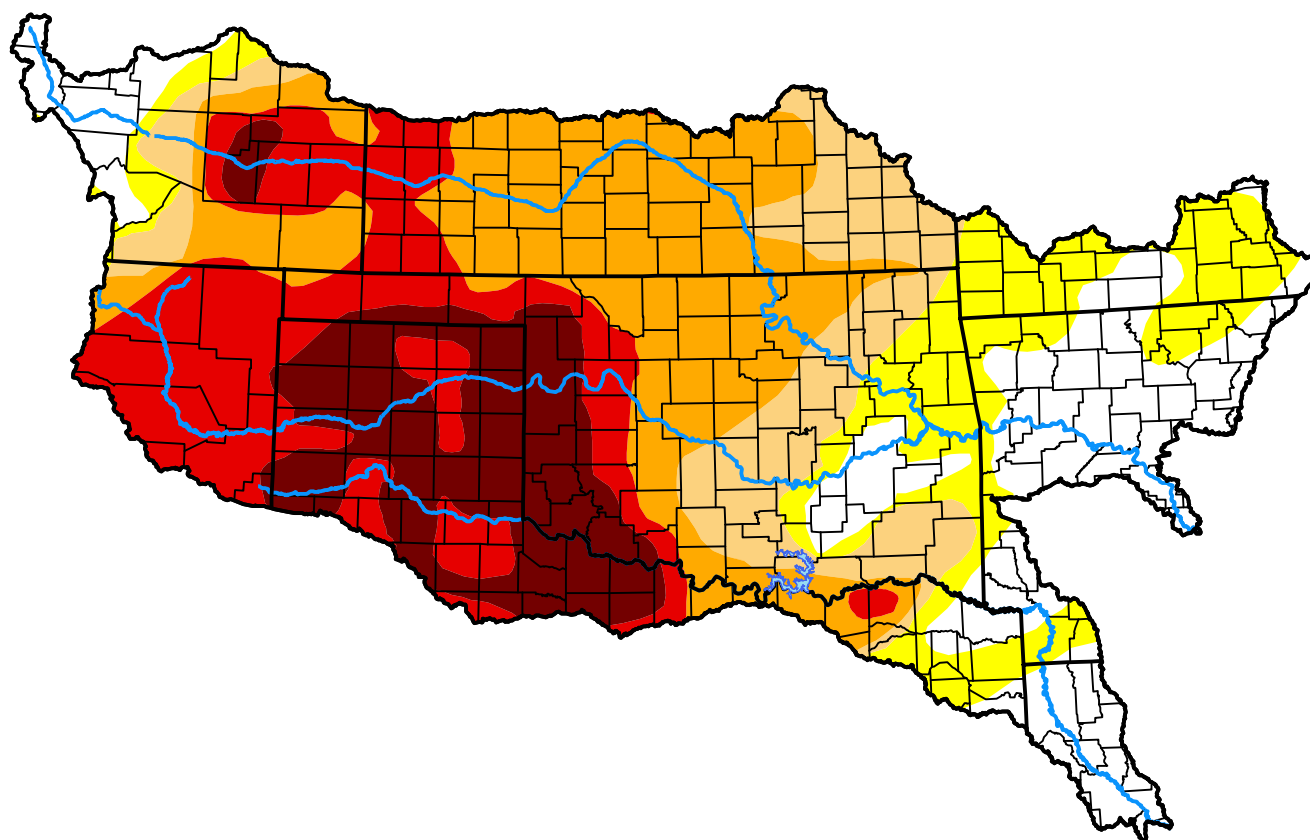


# Arkansas-White-Red Watershed

April 15, 2014

(Released Thursday, Apr. 17, 2014)

Valid 8 a.m. EDT



Intensity:



*The Drought Monitor focuses on broad-scale conditions. Local conditions may vary. For more information on the Drought Monitor, go to <https://droughtmonitor.unl.edu/About.aspx>*

Author:

Brian Fuchs  
National Drought Mitigation Center



[droughtmonitor.unl.edu](https://droughtmonitor.unl.edu)