

# U.S. Drought Monitor Southeast

**June 24, 2014**

*(Released Thursday, Jun. 26, 2014)*

Valid 8 a.m. EDT

## Drought Conditions (Percent Area)

	None	D0-D4	D1-D4	D2-D4	D3-D4	D4
<b>Current</b>	94.79	5.21	0.27	0.00	0.00	0.00
<b>Last Week</b> <i>06-17-2014</i>	95.03	4.97	0.27	0.00	0.00	0.00
<b>3 Months Ago</b> <i>03-25-2014</i>	93.97	6.03	0.61	0.00	0.00	0.00
<b>Start of Calendar Year</b> <i>12-31-2013</i>	91.83	8.17	0.00	0.00	0.00	0.00
<b>Start of Water Year</b> <i>10-01-2013</i>	90.69	9.31	0.00	0.00	0.00	0.00
<b>One Year Ago</b> <i>06-25-2013</i>	91.40	8.60	0.00	0.00	0.00	0.00

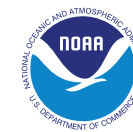
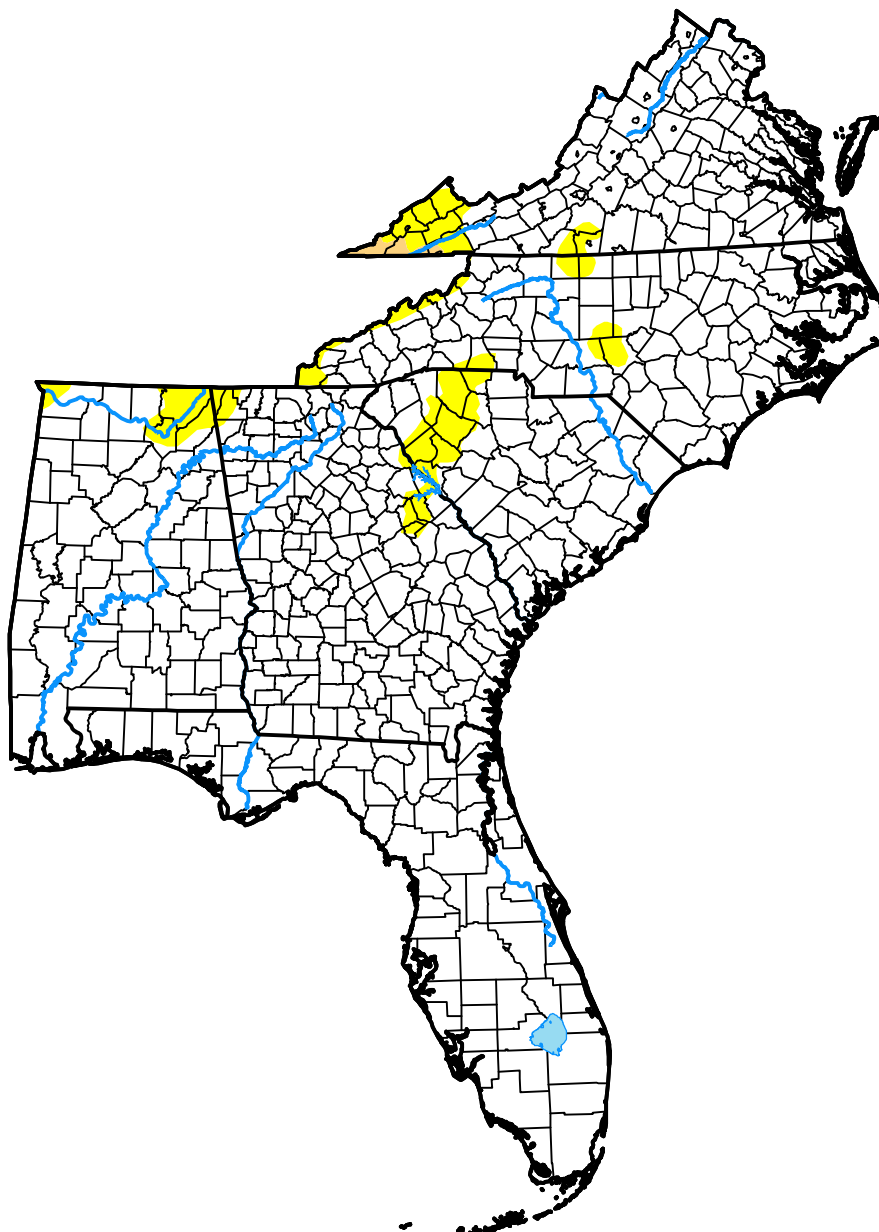
## Intensity:

 None	 D2 Severe Drought
 D0 Abnormally Dry	 D3 Extreme Drought
 D1 Moderate Drought	 D4 Exceptional Drought

*The Drought Monitor focuses on broad-scale conditions. Local conditions may vary. For more information on the Drought Monitor, go to <https://droughtmonitor.unl.edu/About.aspx>*

## Author:

Eric Luebehusen  
U.S. Department of Agriculture



**droughtmonitor.unl.edu**