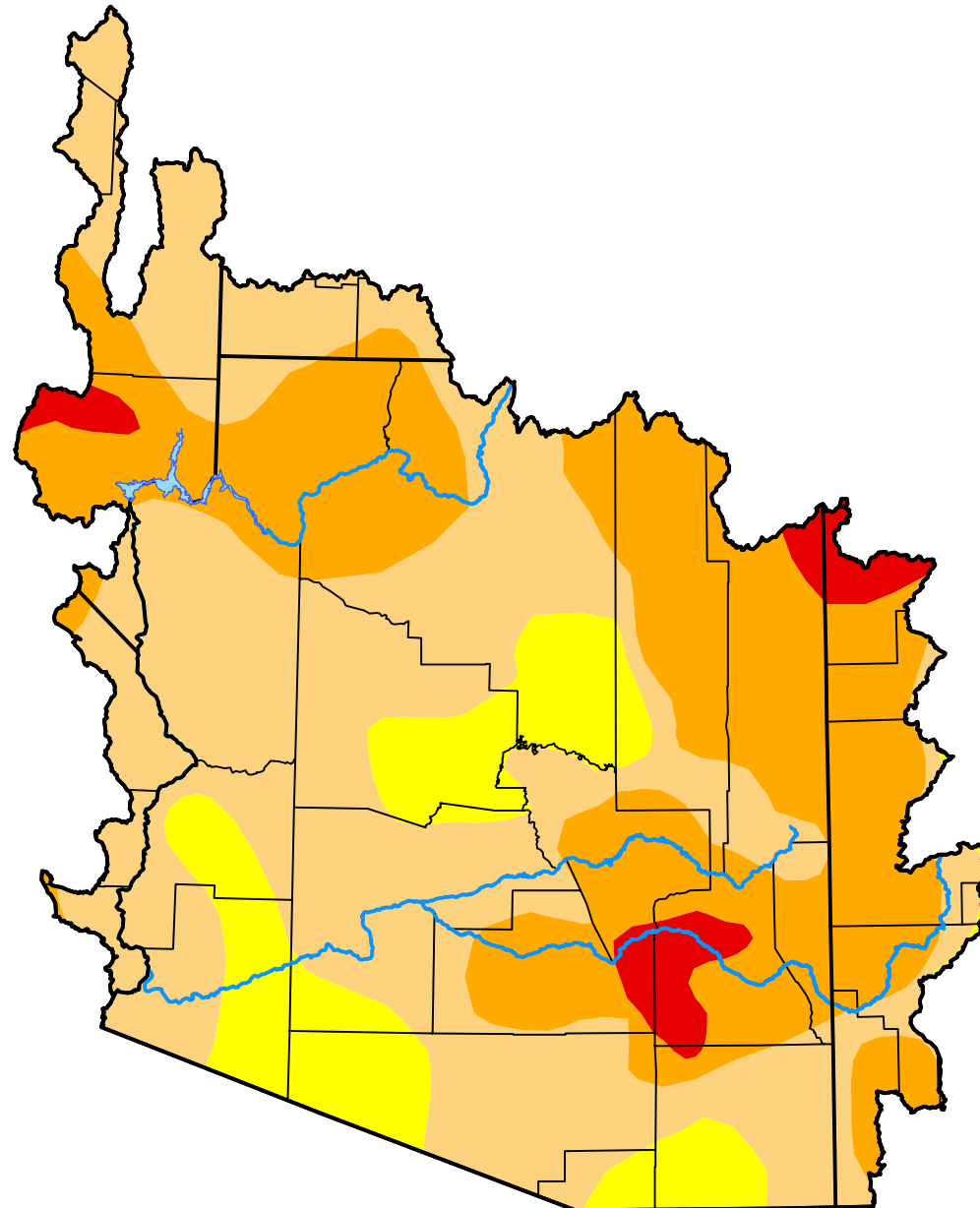


U.S. Drought Monitor

Lower Colorado Watershed

October 14, 2014
 (Released Thursday, Oct. 16, 2014)
 Valid 8 a.m. EDT



Drought Conditions (Percent Area)

	None	D0	D1	D2	D3	D4
Current	0.00	12.65	48.87	35.15	3.33	0.00
Last Week <i>10-09-2014</i>	0.00	12.65	48.87	35.15	3.33	0.00
3 Months Ago <i>07-17-2014</i>	0.00	1.72	19.14	57.34	21.80	0.00
Start of Calendar Year <i>01-02-2014</i>	18.96	24.45	39.26	17.33	0.00	0.00
Start of Water Year <i>10-02-2014</i>	0.00	12.65	48.87	35.15	3.33	0.00
One Year Ago <i>10-17-2013</i>	14.27	22.14	38.36	25.23	0.00	0.00

Intensity:



The Drought Monitor focuses on broad-scale conditions. Local conditions may vary. For more information on the Drought Monitor, go to <https://droughtmonitor.unl.edu/About.aspx>

Author:

Mark Svoboda
 National Drought Mitigation Center

