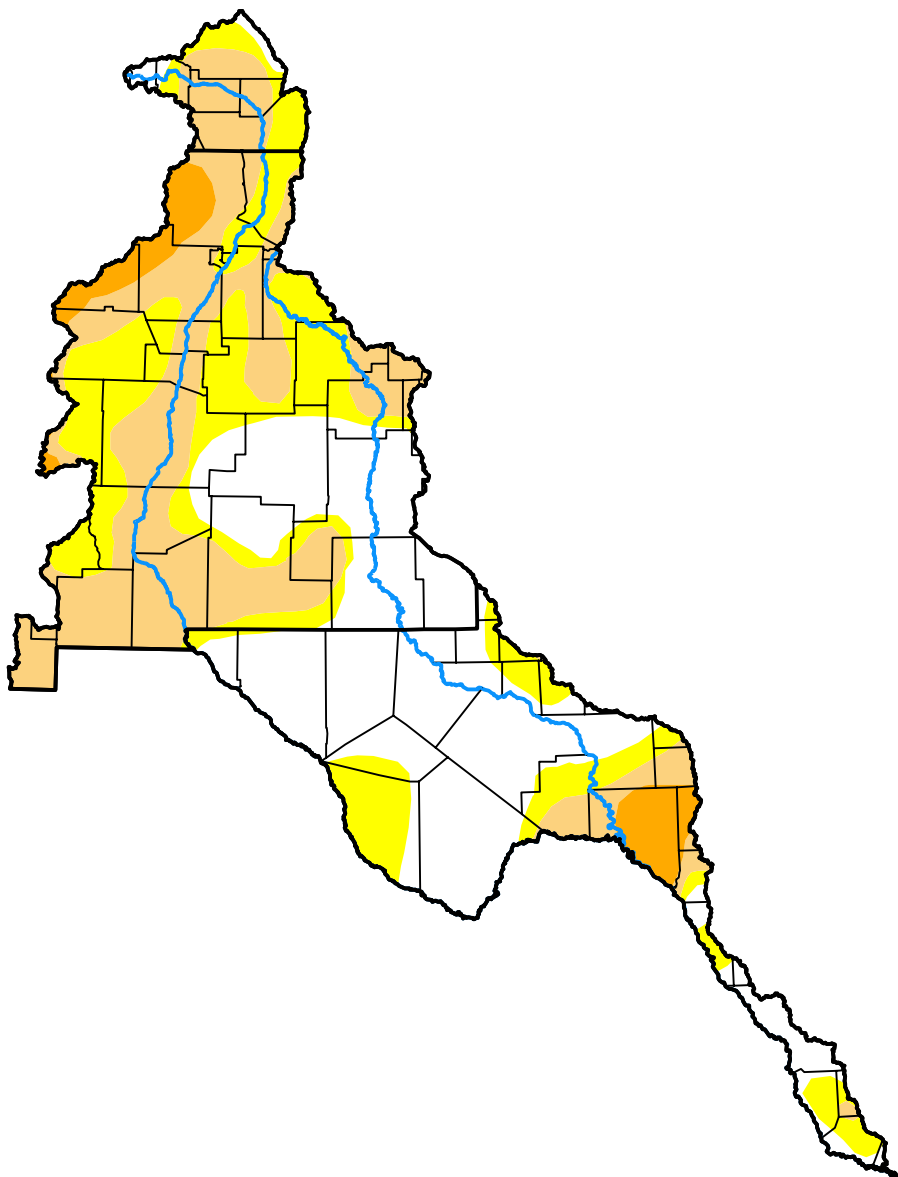


U.S. Drought Monitor Rio Grande Watershed

October 21, 2014
(Released Thursday, Oct. 23, 2014)
Valid 8 a.m. EDT



Intensity:



The Drought Monitor focuses on broad-scale conditions. Local conditions may vary. For more information on the Drought Monitor, go to <https://droughtmonitor.unl.edu/About.aspx>

Author:

Michael Brewer
NCEI/NOAA



droughtmonitor.unl.edu