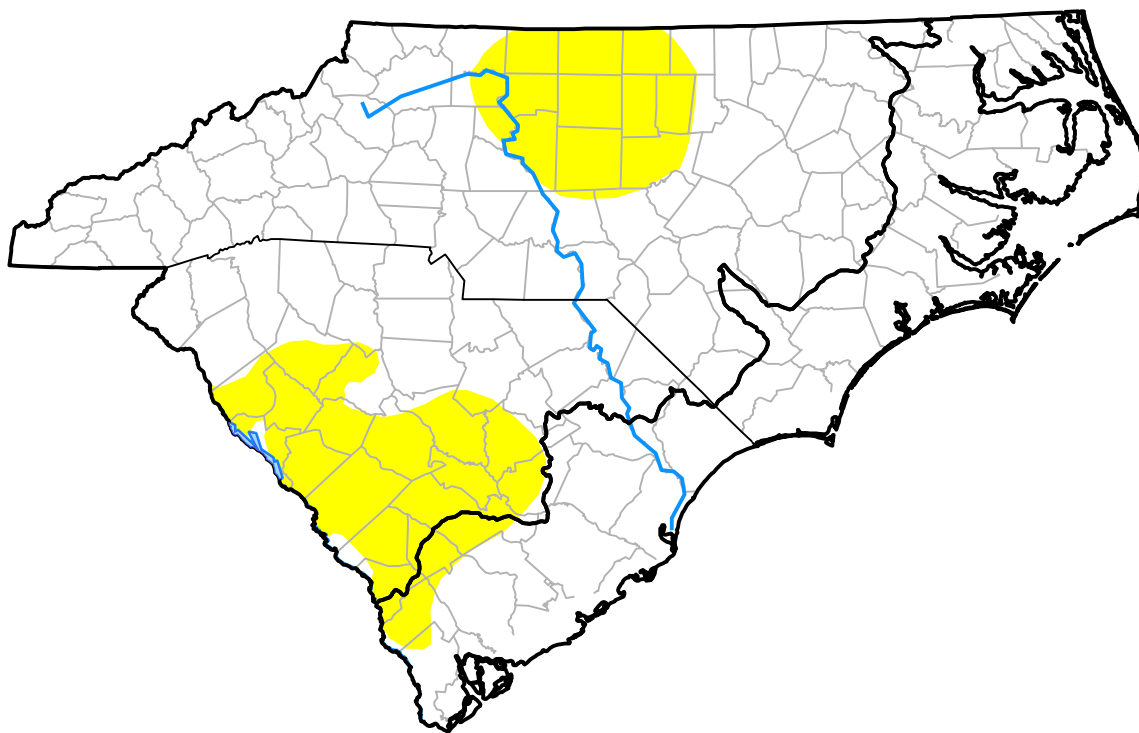


U.S. Drought Monitor

Coastal Carolinas RDEWS

October 21, 2014
 (Released Thursday, Oct. 23, 2014)
 Valid 8 a.m. EDT



Drought Conditions (Percent Area)

	None	D0	D1	D2	D3	D4
Current	99.27	0.73	0.00	0.00	0.00	0.00
Last Week <i>10-16-2014</i>	99.27	0.73	0.00	0.00	0.00	0.00
3 Months Ago <i>07-24-2014</i>	91.54	8.46	0.00	0.00	0.00	0.00
Start of Calendar Year <i>01-02-2014</i>	78.82	21.18	0.00	0.00	0.00	0.00
Start of Water Year <i>10-02-2014</i>	94.28	5.72	0.00	0.00	0.00	0.00
One Year Ago <i>10-24-2013</i>	73.31	26.69	0.00	0.00	0.00	0.00

Intensity:



The Drought Monitor focuses on broad-scale conditions. Local conditions may vary. For more information on the Drought Monitor, go to <https://droughtmonitor.unl.edu/About.aspx>

Author:

Michael Brewer
 NCEI/NOAA

