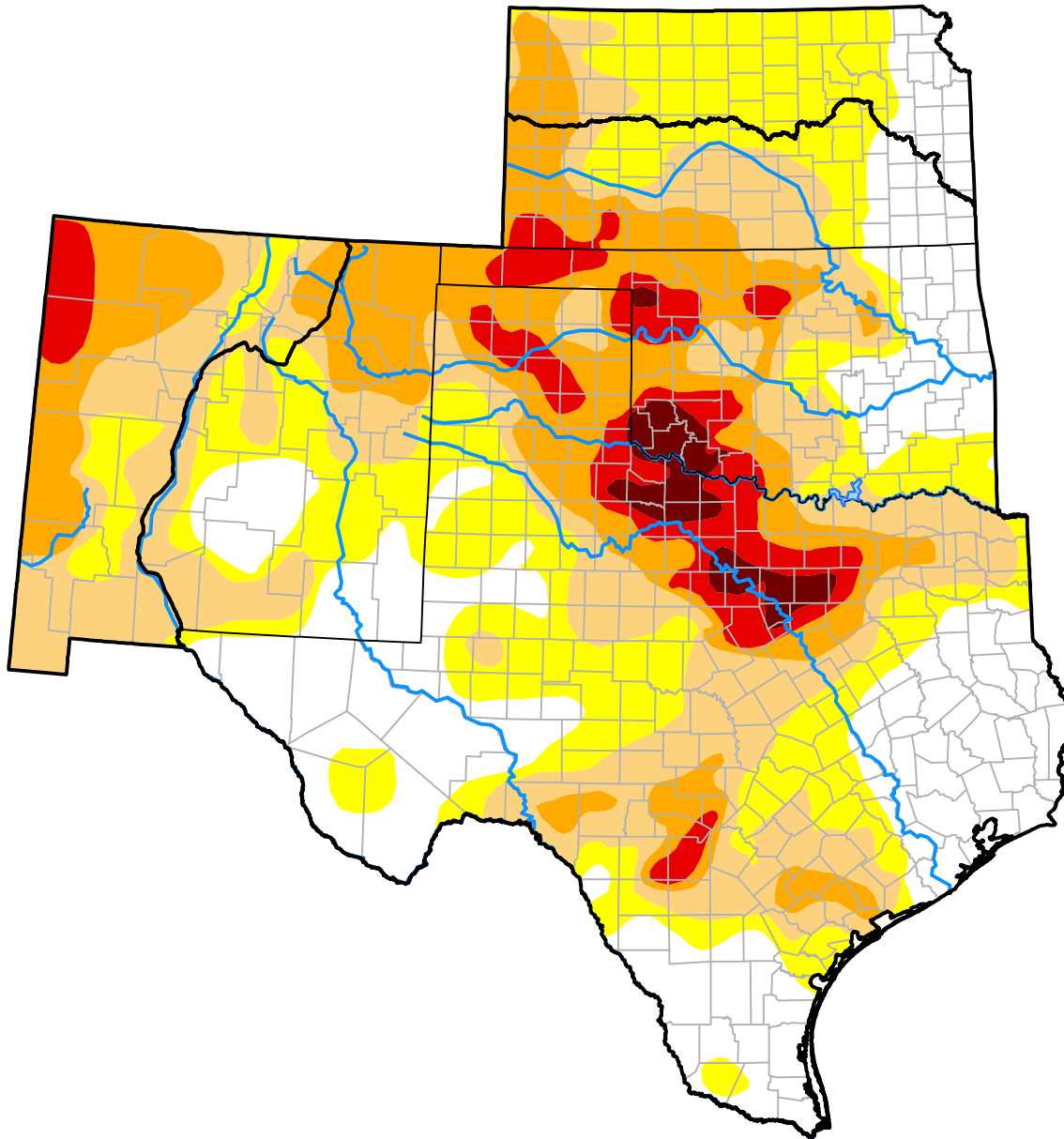


U.S. Drought Monitor

Southern Plains RDEWS

December 2, 2014
 (Released Thursday, Dec. 4, 2014)
 Valid 7 a.m. EST



Drought Conditions (Percent Area)

	None	D0	D1	D2	D3	D4
Current	26.72	21.63	24.84	17.50	7.04	2.27
Last Week <i>11-26-2014</i>	28.13	21.34	24.07	17.73	6.47	2.27
3 Months Ago <i>09-04-2014</i>	11.38	23.48	25.35	25.89	11.94	1.95
Start of Calendar Year <i>01-02-2014</i>	24.42	24.25	27.44	18.72	4.35	0.82
Start of Water Year <i>10-02-2014</i>	22.54	21.15	22.26	22.16	9.62	2.28
One Year Ago <i>12-05-2013</i>	22.35	24.92	28.26	19.27	4.27	0.92

Intensity:

- None
- D0 Abnormally Dry
- D1 Moderate Drought
- D2 Severe Drought
- D3 Extreme Drought
- D4 Exceptional Drought

The Drought Monitor focuses on broad-scale conditions. Local conditions may vary. For more information on the Drought Monitor, go to <https://droughtmonitor.unl.edu/About.aspx>

Author:

Anthony Artusa
 NOAA/NWS/NCEP/CPC

