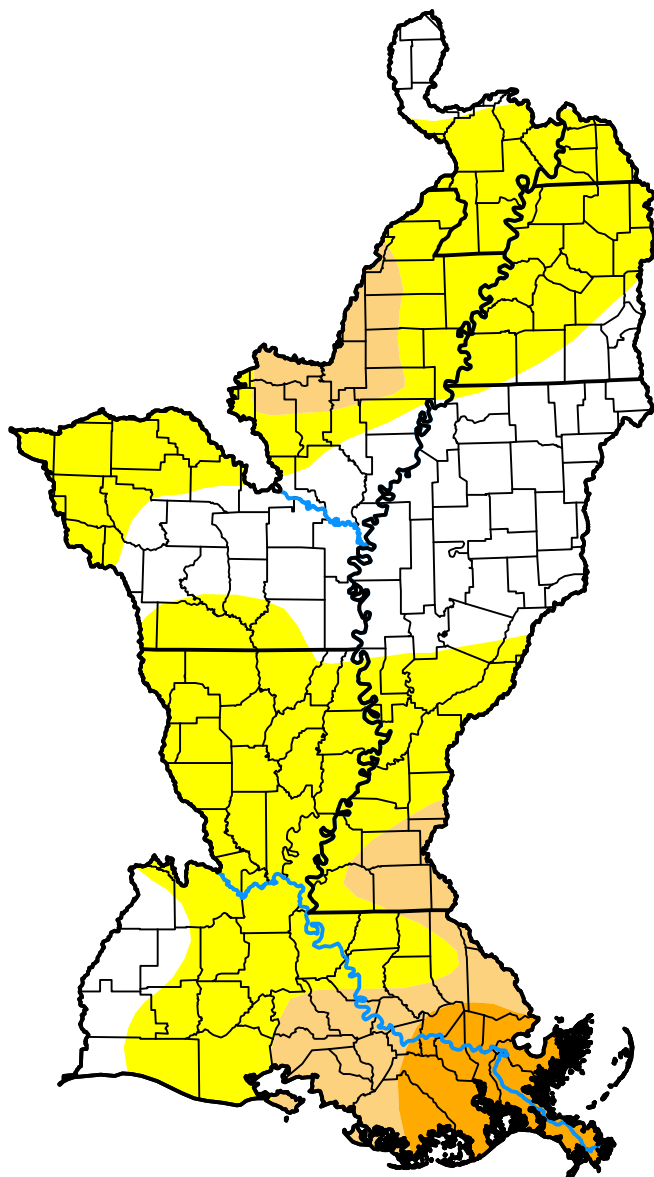


# U.S. Drought Monitor

## Lower Mississippi Watershed

**December 23, 2014**  
(Released Wednesday, Dec. 24, 2014)  
Valid 7 a.m. EST



### Intensity:



*The Drought Monitor focuses on broad-scale conditions. Local conditions may vary. For more information on the Drought Monitor, go to <https://droughtmonitor.unl.edu/About.aspx>*

### Author:

David Miskus  
NOAA/NWS/NCEP/CPC



[droughtmonitor.unl.edu](https://droughtmonitor.unl.edu)