

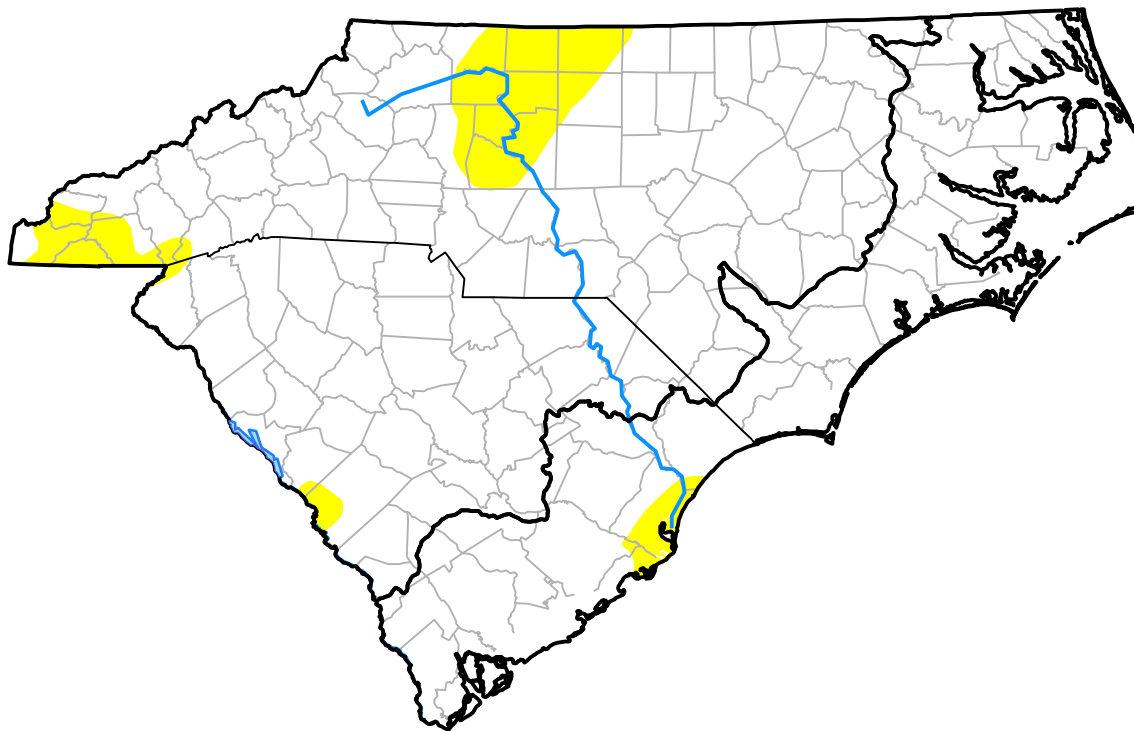
Carolinas RDEWS and Surrounding Areas

(Released Thursday, Jan. 22, 2015)

10:00 a.m. EST

Drought Conditions (Percent Area)

	None	D0-D4	D1-D4	D2-D4	D3-D4	D4
Current	92.72	7.28	0.00	0.00	0.00	0.00
Last Week <i>01-15-2015</i>	94.34	5.66	0.00	0.00	0.00	0.00
3 Months Ago <i>10-23-2014</i>	80.57	19.43	0.00	0.00	0.00	0.00
Start of Calendar Year <i>12-31-2014</i>	87.15	12.85	0.00	0.00	0.00	0.00
Start of Water Year <i>10-02-2014</i>	73.31	26.69	0.00	0.00	0.00	0.00
One Year Ago <i>01-23-2014</i>	95.58	4.42	0.00	0.00	0.00	0.00



Intensity:

- None
- D0 Abnormally Dry
- D1 Moderate Drought
- D2 Severe Drought
- D3 Extreme Drought
- D4 Exceptional Drought

The Drought Monitor focuses on broad-scale conditions. Local conditions may vary. For more information on the Drought Monitor, go to <https://droughtmonitor.unl.edu/About.aspx>

Author:

Richard Tinker
CPC/NOAA/NWS/NCEP

