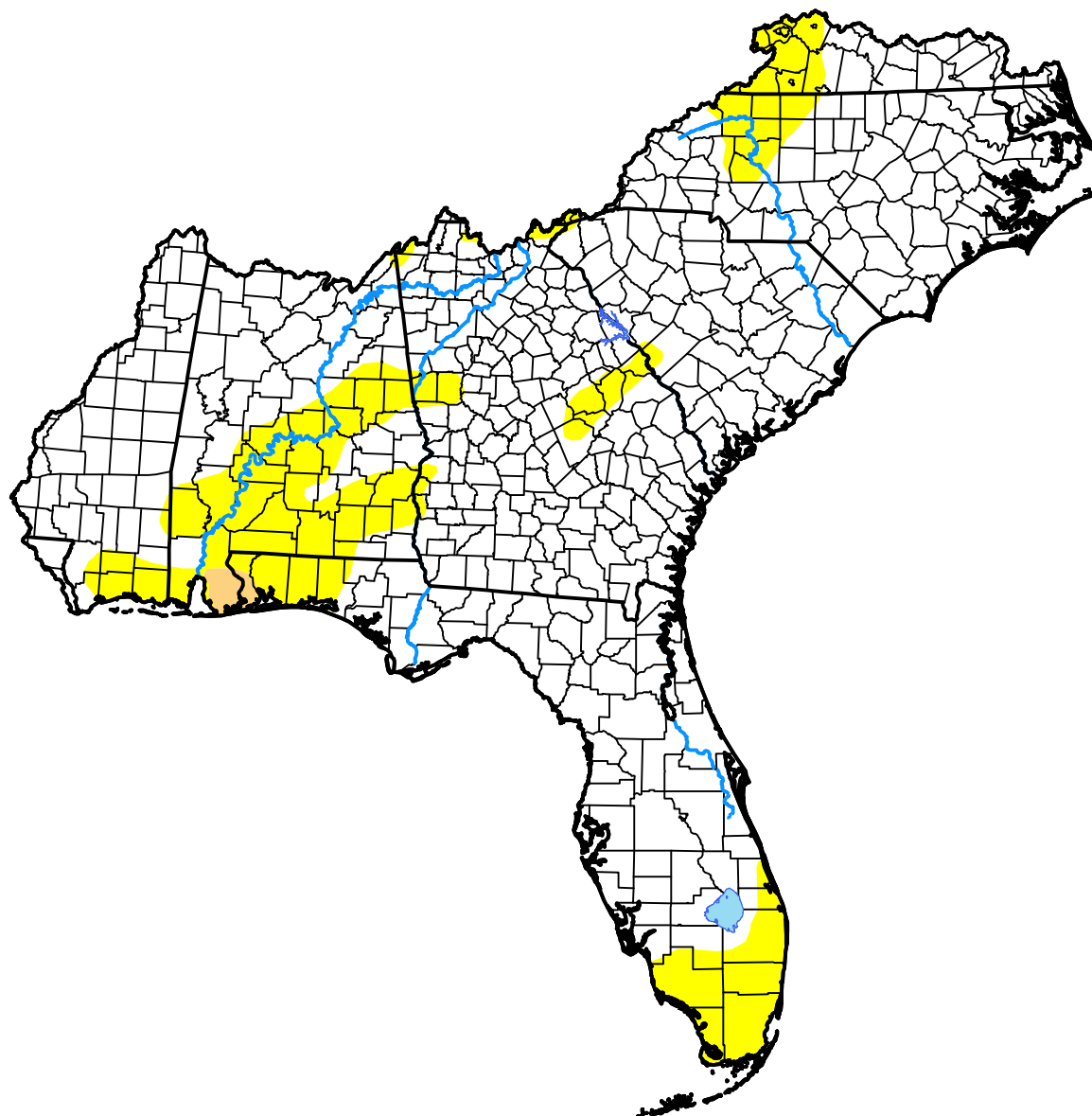


# South Atlantic-Gulf Watershed

February 3, 2015

(Released Thursday, Feb. 5, 2015)

Valid 7 a.m. EST



Intensity:



*The Drought Monitor focuses on broad-scale conditions. Local conditions may vary. For more information on the Drought Monitor, go to <https://droughtmonitor.unl.edu/About.aspx>*

Author:

Brian Fuchs  
National Drought Mitigation Center



[droughtmonitor.unl.edu](https://droughtmonitor.unl.edu)