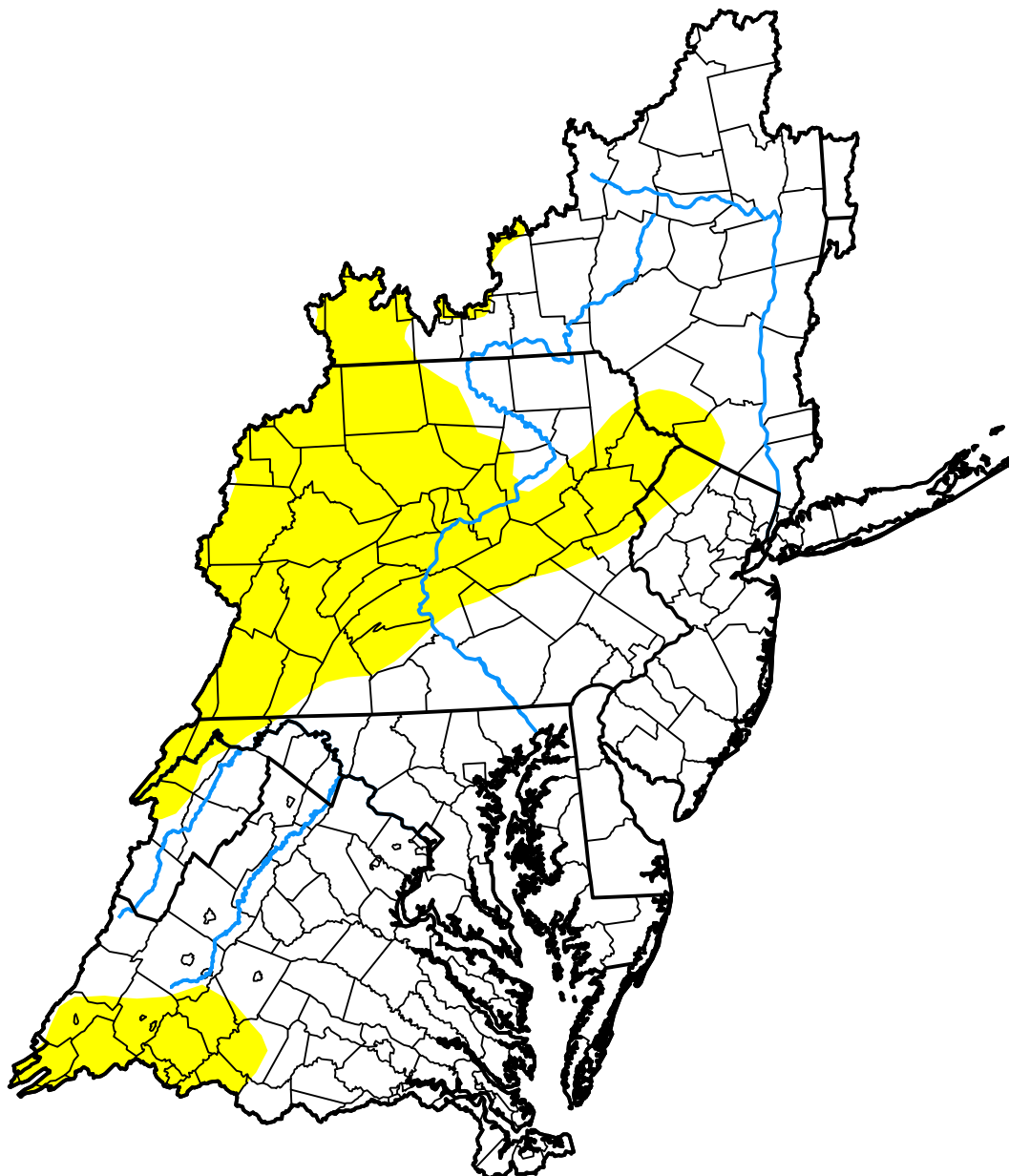


U.S. Drought Monitor

Mid Atlantic Watershed

February 10, 2015
 (Released Thursday, Feb. 12, 2015)

Valid 7 a.m. EST



Drought Conditions (Percent Area)

	None	D0	D1	D2	D3	D4
Current	72.73	27.27	0.00	0.00	0.00	0.00
Last Week <i>02-05-2015</i>	76.29	23.71	0.00	0.00	0.00	0.00
3 Months Ago <i>11-13-2014</i>	69.80	28.12	2.07	0.00	0.00	0.00
Start of Calendar Year <i>12-31-2014</i>	78.19	21.81	0.00	0.00	0.00	0.00
Start of Water Year <i>10-02-2014</i>	57.11	40.75	2.14	0.00	0.00	0.00
One Year Ago <i>02-13-2014</i>	90.42	9.58	0.00	0.00	0.00	0.00

Intensity:

- None
- D0 Abnormally Dry
- D1 Moderate Drought
- D2 Severe Drought
- D3 Extreme Drought
- D4 Exceptional Drought

The Drought Monitor focuses on broad-scale conditions. Local conditions may vary. For more information on the Drought Monitor, go to <https://droughtmonitor.unl.edu/About.aspx>

Author:

David Simeral
 Western Regional Climate Center

