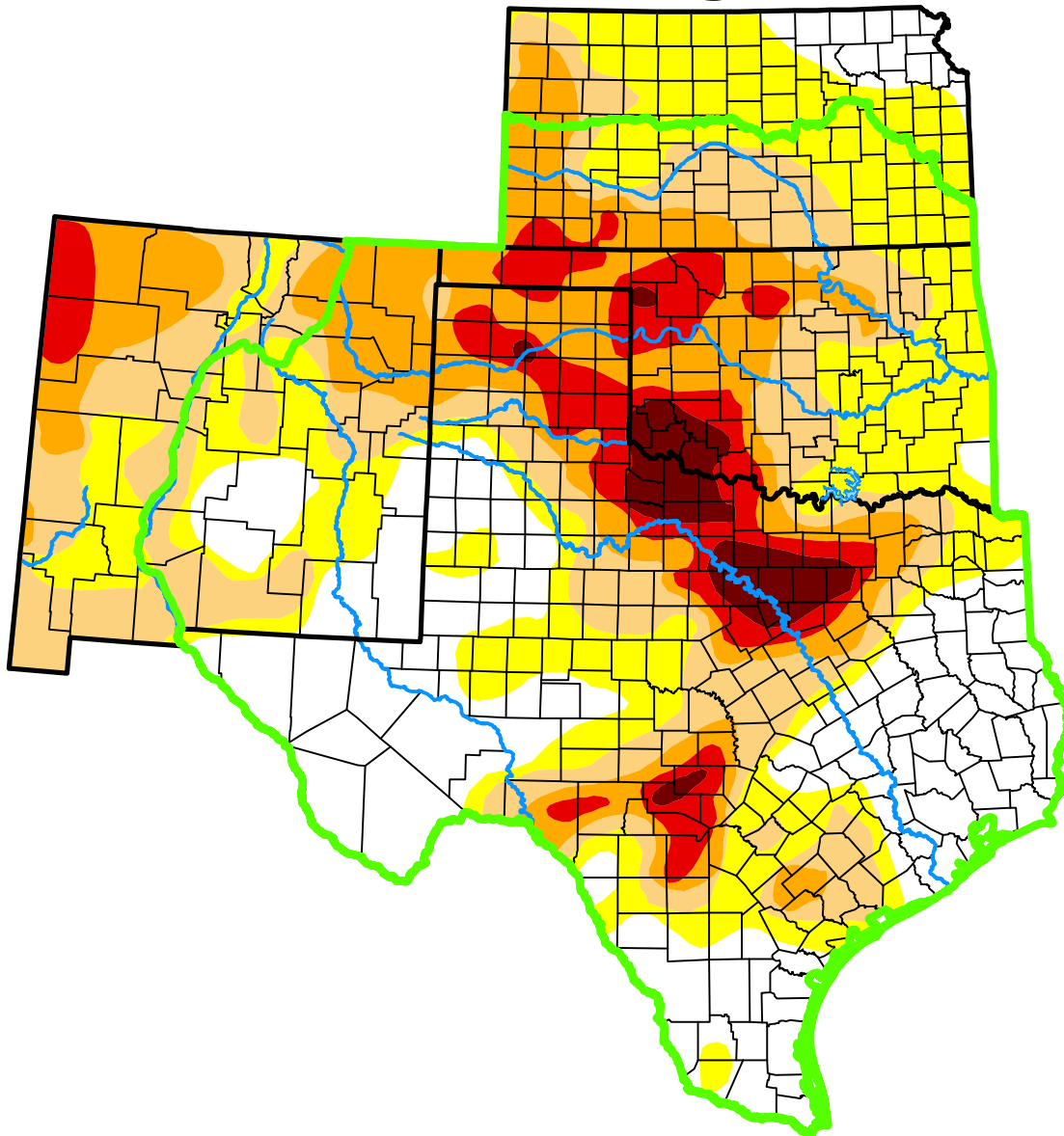


# U.S. Drought Monitor

## Southern Plains DEWS and Surrounding Areas

**February 10, 2015**  
 (Released Thursday, Feb. 12, 2015)  
 Valid 7 a.m. EST



*Drought Conditions (Percent Area)*

	None	D0	D1	D2	D3	D4
<b>Current</b>	30.22	23.85	18.50	15.49	8.33	3.60
<b>Last Week</b> <i>02-03-2015</i>	30.92	24.01	18.86	15.50	8.11	2.60
<b>3 Months Ago</b> <i>11-11-2014</i>	28.16	23.26	21.84	16.97	6.64	3.12
<b>Start of Calendar Year</b> <i>12-30-2014</i>	29.70	21.51	21.59	16.28	8.10	2.82
<b>Start of Water Year</b> <i>09-30-2014</i>	23.56	22.06	22.47	21.36	8.19	2.36
<b>One Year Ago</b> <i>02-11-2014</i>	12.25	28.71	28.38	20.09	9.76	0.81

(Statistics for area highlighted in green)

Intensity:

- None
- D0 Abnormally Dry
- D1 Moderate Drought
- D2 Severe Drought
- D3 Extreme Drought
- D4 Exceptional Drought

*The Drought Monitor focuses on broad-scale conditions. Local conditions may vary. For more information on the Drought Monitor, go to <https://droughtmonitor.unl.edu/About.aspx>*

Author:

David Simeral  
 Western Regional Climate Center

