

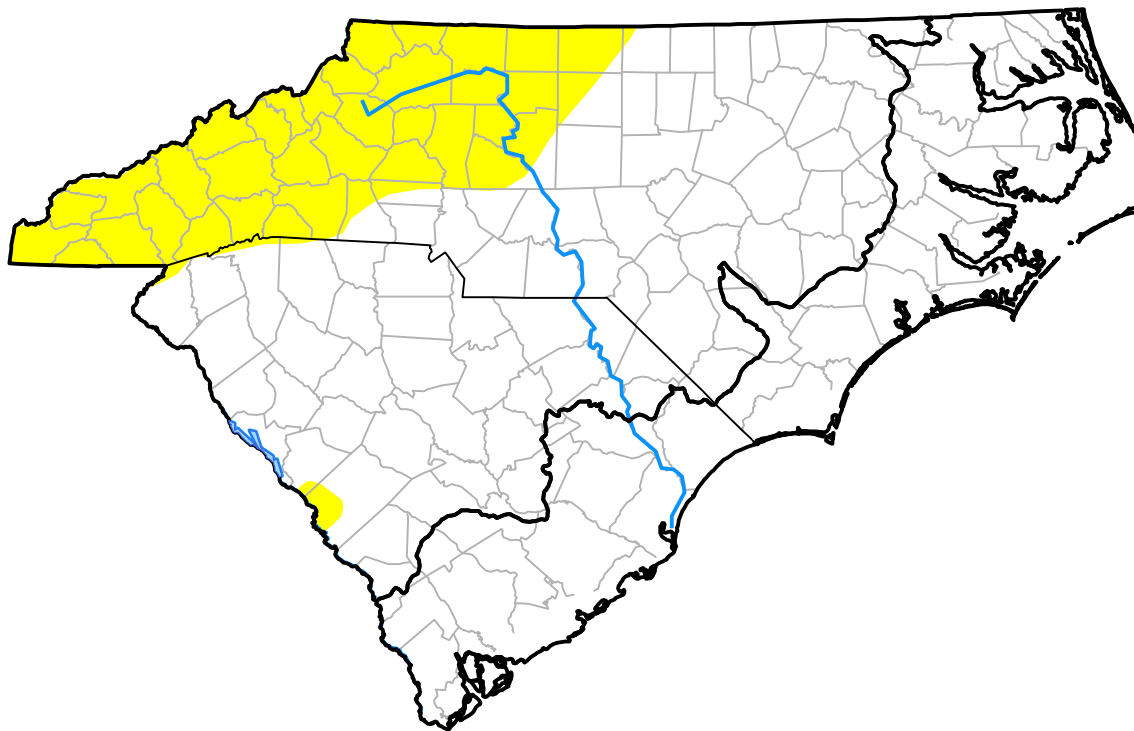
# Carolinas RDEWS and Surrounding Areas

(Released Thursday, Feb. 19, 2015)

10:00 a.m. EST

Drought Conditions (Percent Area)

	None	D0-D4	D1-D4	D2-D4	D3-D4	D4
<b>Current</b>	80.85	19.15	0.00	0.00	0.00	0.00
<b>Last Week</b> <i>02-12-2015</i>	90.26	9.74	0.00	0.00	0.00	0.00
<b>3 Months Ago</b> <i>11-20-2014</i>	25.68	74.32	0.28	0.00	0.00	0.00
<b>Start of Calendar Year</b> <i>12-31-2014</i>	87.15	12.85	0.00	0.00	0.00	0.00
<b>Start of Water Year</b> <i>10-02-2014</i>	73.31	26.69	0.00	0.00	0.00	0.00
<b>One Year Ago</b> <i>02-20-2014</i>	100.00	0.00	0.00	0.00	0.00	0.00



Intensity:

- None
- D0 Abnormally Dry
- D1 Moderate Drought
- D2 Severe Drought
- D3 Extreme Drought
- D4 Exceptional Drought

The Drought Monitor focuses on broad-scale conditions. Local conditions may vary. For more information on the Drought Monitor, go to <https://droughtmonitor.unl.edu/About.aspx>

Author:

Richard Heim  
NCEI/NOAA

