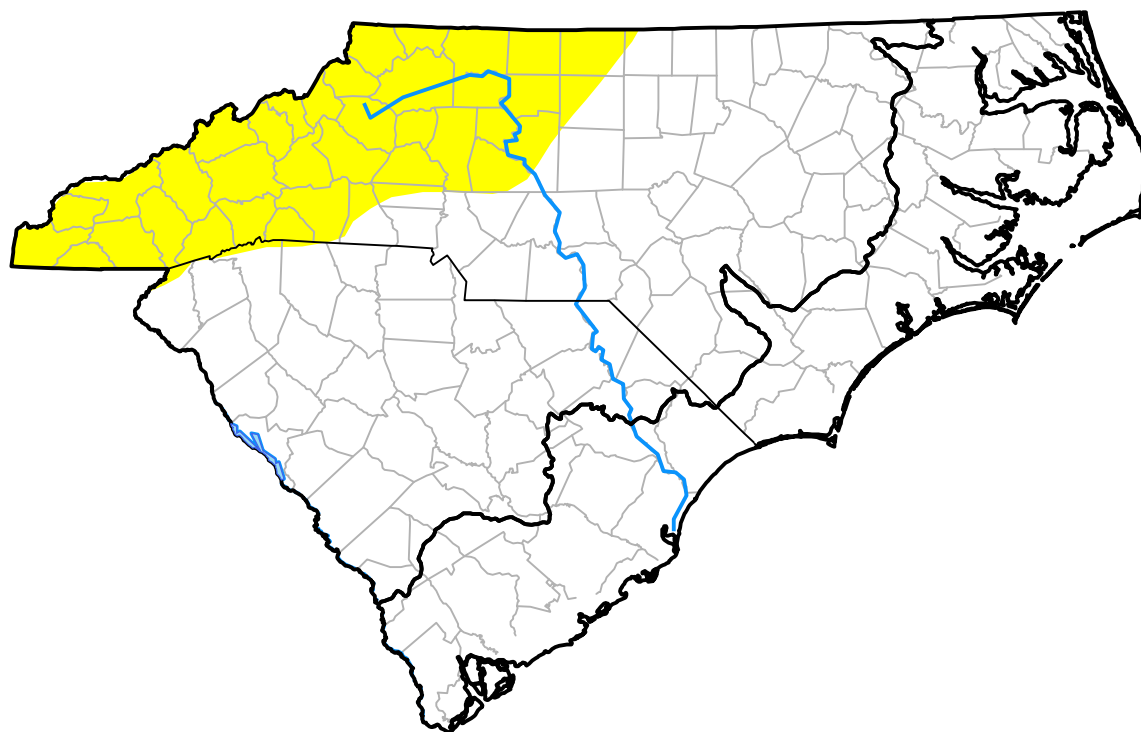


U.S. Drought Monitor

Coastal Carolinas RDEWS

March 3, 2015
 (Released Thursday, Mar. 5, 2015)
 Valid 7 a.m. EST



Drought Conditions (Percent Area)

	None	D0-D4	D1-D4	D2-D4	D3-D4	D4
Current	100.00	0.00	0.00	0.00	0.00	0.00
Last Week <i>02-26-2015</i>	100.00	0.00	0.00	0.00	0.00	0.00
3 Months Ago <i>12-04-2014</i>	44.06	55.94	0.00	0.00	0.00	0.00
Start of Calendar Year <i>12-31-2014</i>	87.83	12.17	0.00	0.00	0.00	0.00
Start of Water Year <i>10-02-2014</i>	94.28	5.72	0.00	0.00	0.00	0.00
One Year Ago <i>03-06-2014</i>	100.00	0.00	0.00	0.00	0.00	0.00

Intensity:



The Drought Monitor focuses on broad-scale conditions. Local conditions may vary. For more information on the Drought Monitor, go to <https://droughtmonitor.unl.edu/About.aspx>

Author:

David Simeral
 Western Regional Climate Center



droughtmonitor.unl.edu