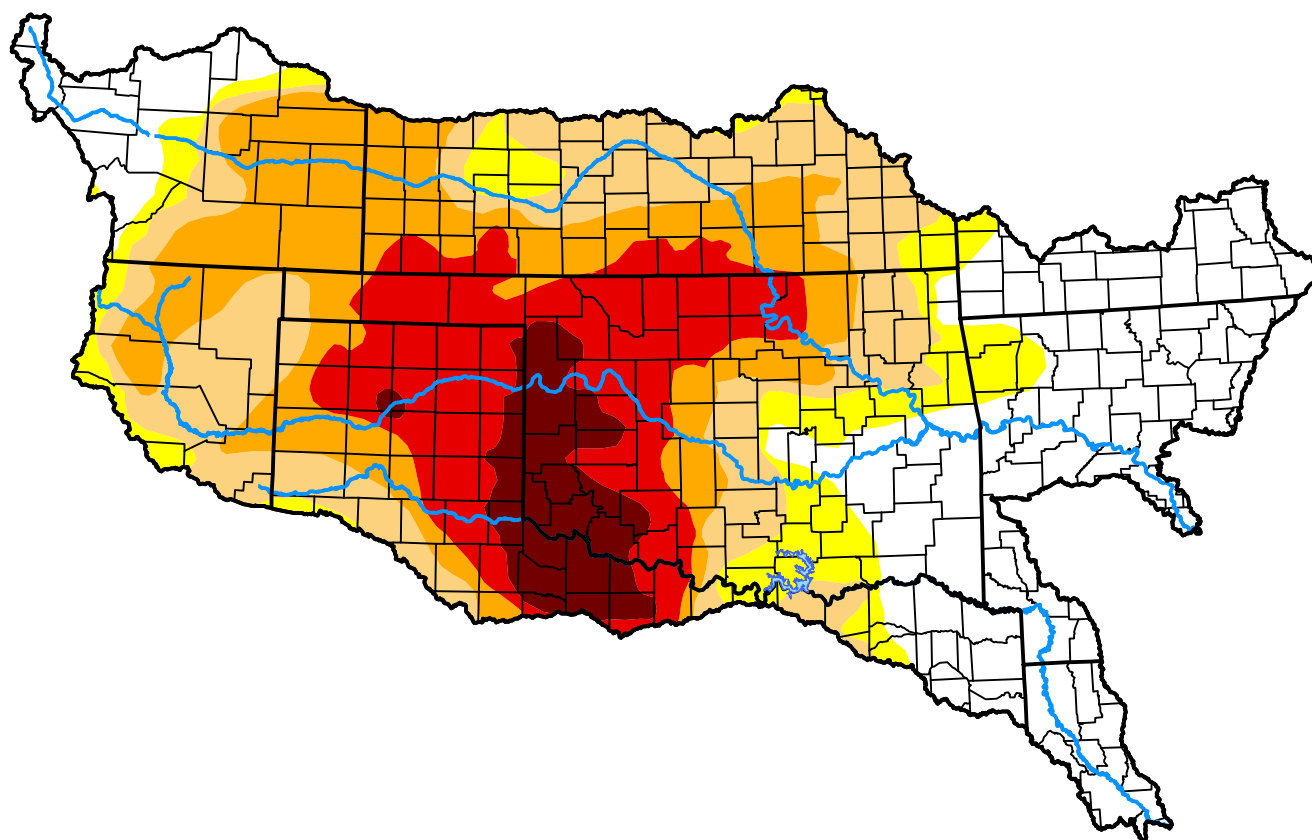


Arkansas-White-Red Watershed

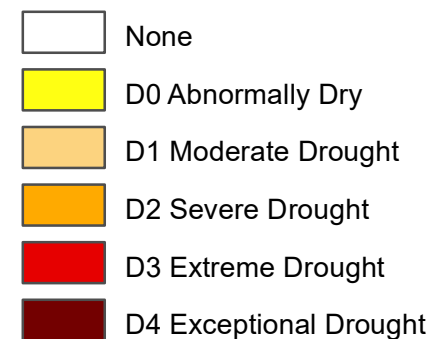
April 7, 2015

(Released Thursday, Apr. 9, 2015)

Valid 8 a.m. EDT



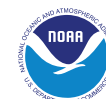
Intensity:



The Drought Monitor focuses on broad-scale conditions. Local conditions may vary. For more information on the Drought Monitor, go to <https://droughtmonitor.unl.edu/About.aspx>

Author:

Michael Brewer
NCEI/NOAA



droughtmonitor.unl.edu