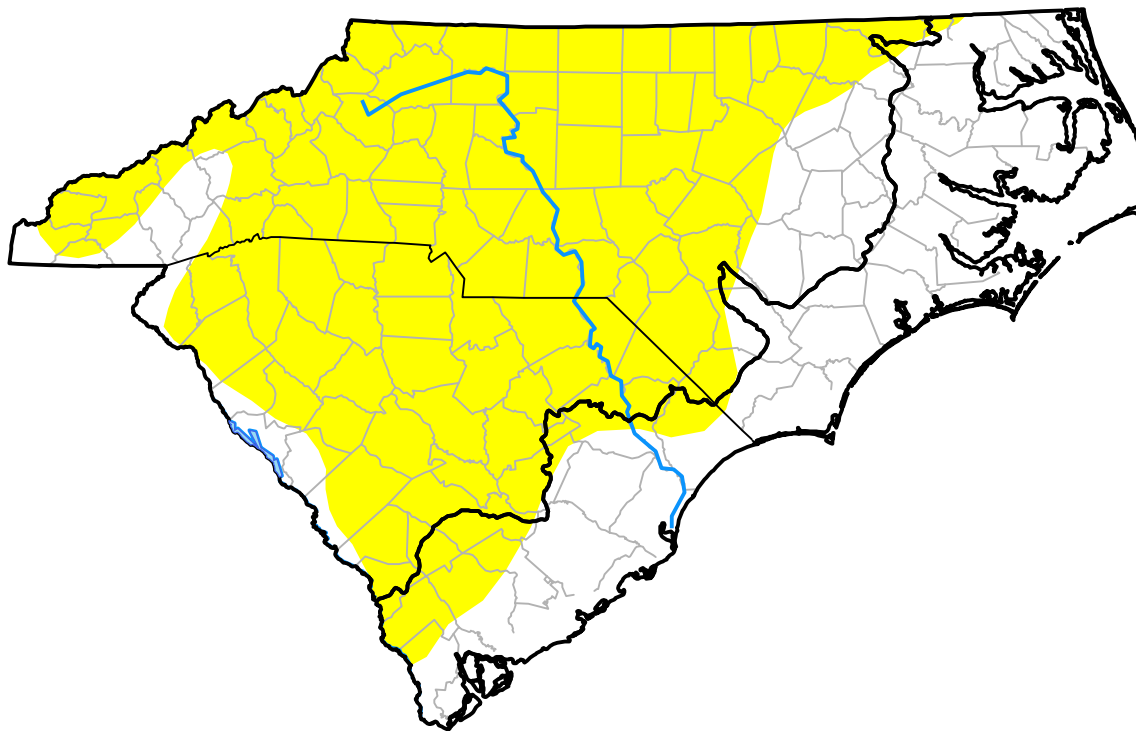


# U.S. Drought Monitor

## Coastal Carolinas RDEWS

**June 2, 2015**  
 (Released Thursday, Jun. 4, 2015)  
 Valid 8 a.m. EDT



*Drought Conditions (Percent Area)*

	None	D0	D1	D2	D3	D4
<b>Current</b>	90.87	9.13	0.00	0.00	0.00	0.00
<b>Last Week</b> <i>05-28-2015</i>	100.00	0.00	0.00	0.00	0.00	0.00
<b>3 Months Ago</b> <i>03-05-2015</i>	100.00	0.00	0.00	0.00	0.00	0.00
<b>Start of Calendar Year</b> <i>12-31-2014</i>	87.83	12.17	0.00	0.00	0.00	0.00
<b>Start of Water Year</b> <i>10-02-2014</i>	94.28	5.72	0.00	0.00	0.00	0.00
<b>One Year Ago</b> <i>06-05-2014</i>	100.00	0.00	0.00	0.00	0.00	0.00

*Intensity:*



*The Drought Monitor focuses on broad-scale conditions. Local conditions may vary. For more information on the Drought Monitor, go to <https://droughtmonitor.unl.edu/About.aspx>*

*Author:*

David Miskus  
 NOAA/NWS/NCEP/CPC



**droughtmonitor.unl.edu**