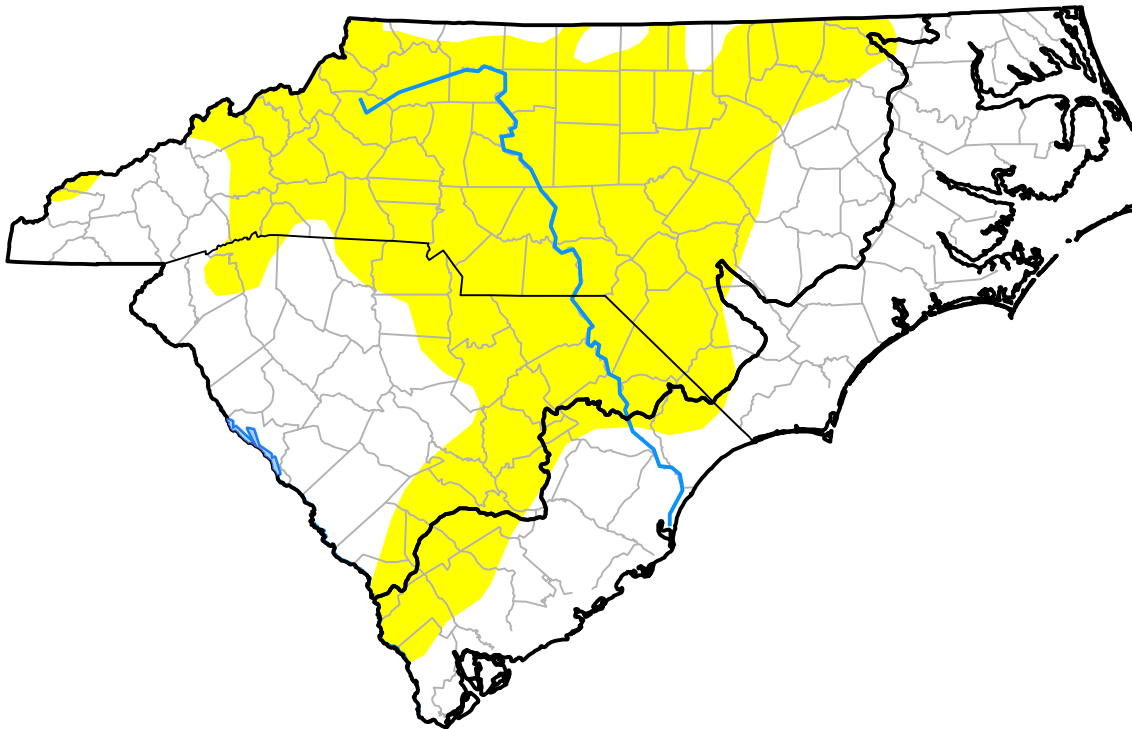


Carolinas RDEWS and Surrounding Areas

10:00 a.m. EDT

Drought Conditions (Percent Area)

	None	D0-D4	D1-D4	D2-D4	D3-D4	D4
Current	50.97	49.03	0.00	0.00	0.00	0.00
Last Week <i>06-04-2015</i>	35.08	64.92	0.00	0.00	0.00	0.00
3 Months Ago <i>03-12-2015</i>	81.17	18.83	0.00	0.00	0.00	0.00
Start of Calendar Year <i>12-31-2014</i>	87.15	12.85	0.00	0.00	0.00	0.00
Start of Water Year <i>10-02-2014</i>	73.31	26.69	0.00	0.00	0.00	0.00
One Year Ago <i>06-12-2014</i>	96.83	3.17	0.00	0.00	0.00	0.00



Intensity:

- None
- D0 Abnormally Dry
- D1 Moderate Drought
- D2 Severe Drought
- D3 Extreme Drought
- D4 Exceptional Drought

The Drought Monitor focuses on broad-scale conditions. Local conditions may vary. For more information on the Drought Monitor, go to <https://droughtmonitor.unl.edu/About.aspx>

Author:

David Miskus
NOAA/NWS/NCEP/CPC

