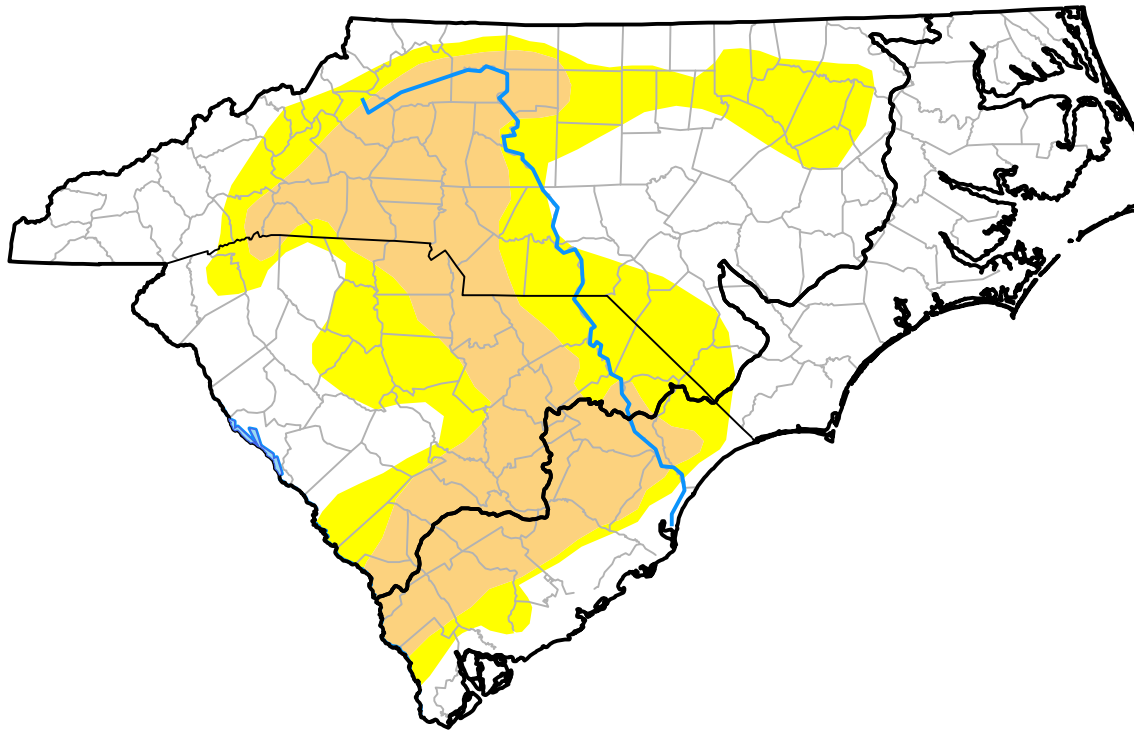


Carolinas RDEWS and Surrounding Areas

(Released Thursday, Jul. 9, 2015)
 10:00 a.m. EDT



Drought Conditions (Percent Area)

	None	D0	D1	D2	D3	D4
Current	51.38	24.06	24.56	0.00	0.00	0.00
Last Week <i>07-02-2015</i>	43.56	36.17	20.27	0.00	0.00	0.00
3 Months Ago <i>04-09-2015</i>	67.05	32.95	0.00	0.00	0.00	0.00
Start of Calendar Year <i>12-31-2014</i>	87.15	12.85	0.00	0.00	0.00	0.00
Start of Water Year <i>10-02-2014</i>	73.31	26.69	0.00	0.00	0.00	0.00
One Year Ago <i>07-10-2014</i>	77.61	22.39	0.00	0.00	0.00	0.00

Intensity:

- None
- D0 Abnormally Dry
- D1 Moderate Drought
- D2 Severe Drought
- D3 Extreme Drought
- D4 Exceptional Drought

The Drought Monitor focuses on broad-scale conditions. Local conditions may vary. For more information on the Drought Monitor, go to <https://droughtmonitor.unl.edu/About.aspx>

Author:

Brian Fuchs
 National Drought Mitigation Center

