

U.S. Drought Monitor

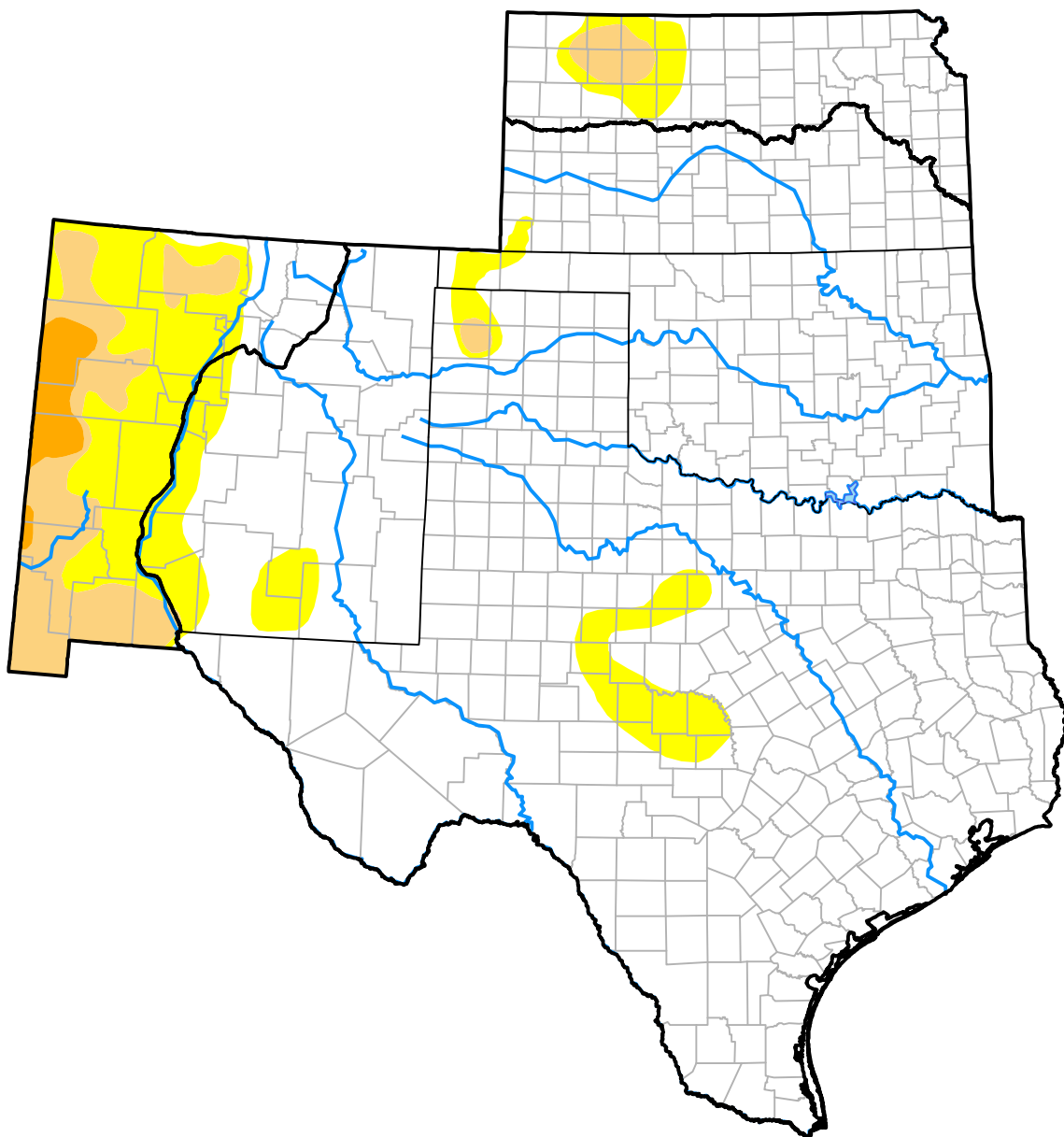
Southern Plains RDEWS

July 7, 2015
 (Released Thursday, Jul. 9, 2015)

Valid 8 a.m. EDT

Drought Conditions (Percent Area)

	None	D0	D1	D2	D3	D4
Current	83.53	10.60	4.78	1.10	0.00	0.00
Last Week <i>07-02-2015</i>	83.53	10.60	4.78	1.10	0.00	0.00
3 Months Ago <i>04-09-2015</i>	37.44	14.45	20.30	12.76	11.03	4.03
Start of Calendar Year <i>12-31-2014</i>	27.08	20.07	23.91	17.83	8.39	2.72
Start of Water Year <i>10-02-2014</i>	22.54	21.15	22.26	22.16	9.62	2.28
One Year Ago <i>07-10-2014</i>	8.08	18.64	19.16	27.61	22.76	3.76



Intensity:

- None
- D0 Abnormally Dry
- D1 Moderate Drought
- D2 Severe Drought
- D3 Extreme Drought
- D4 Exceptional Drought

The Drought Monitor focuses on broad-scale conditions. Local conditions may vary. For more information on the Drought Monitor, go to <https://droughtmonitor.unl.edu/About.aspx>

Author:

Brian Fuchs
 National Drought Mitigation Center



droughtmonitor.unl.edu