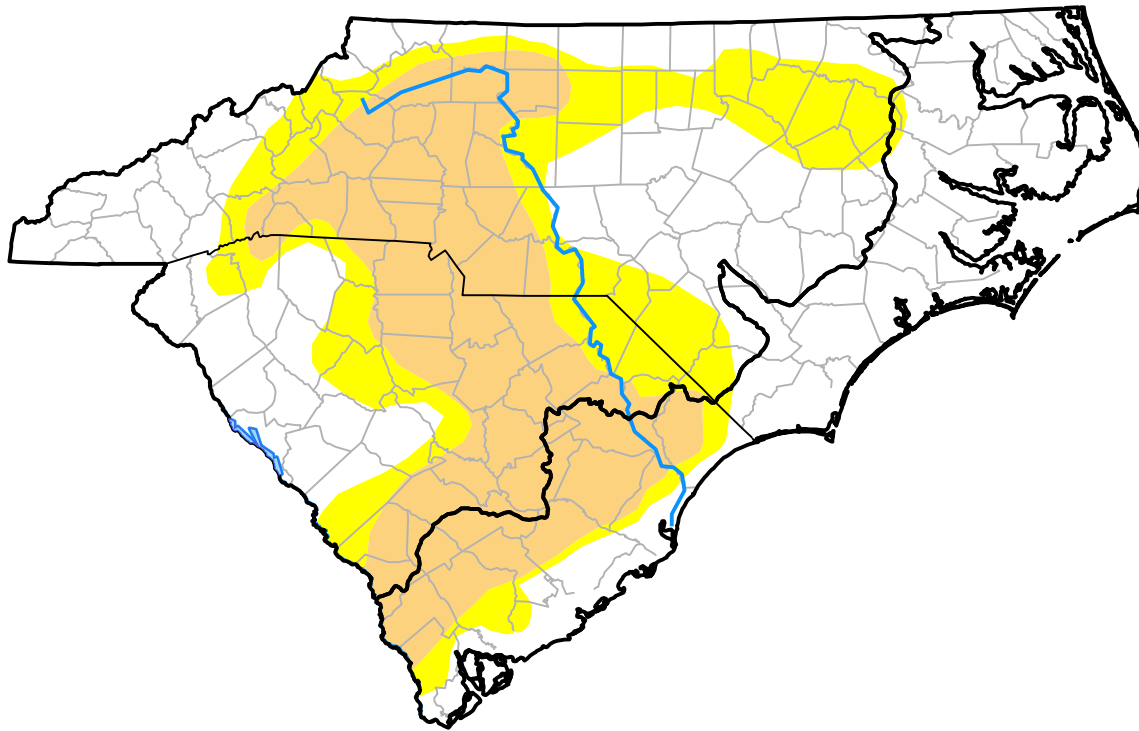


Carolinas RDEWS and Surrounding Areas

10:00 a.m. EDT

Drought Conditions (Percent Area)

	None	D0-D4	D1-D4	D2-D4	D3-D4	D4
Current	50.19	49.81	28.44	0.00	0.00	0.00
Last Week <i>07-16-2015</i>	50.41	49.59	24.56	0.00	0.00	0.00
3 Months Ago <i>04-23-2015</i>	99.81	0.19	0.00	0.00	0.00	0.00
Start of Calendar Year <i>12-31-2014</i>	87.15	12.85	0.00	0.00	0.00	0.00
Start of Water Year <i>10-02-2014</i>	73.31	26.69	0.00	0.00	0.00	0.00
One Year Ago <i>07-24-2014</i>	75.51	24.49	0.00	0.00	0.00	0.00



Intensity:

- None
- D0 Abnormally Dry
- D1 Moderate Drought
- D2 Severe Drought
- D3 Extreme Drought
- D4 Exceptional Drought

The Drought Monitor focuses on broad-scale conditions. Local conditions may vary. For more information on the Drought Monitor, go to <https://droughtmonitor.unl.edu/About.aspx>

Author:

David Simeral
Western Regional Climate Center

