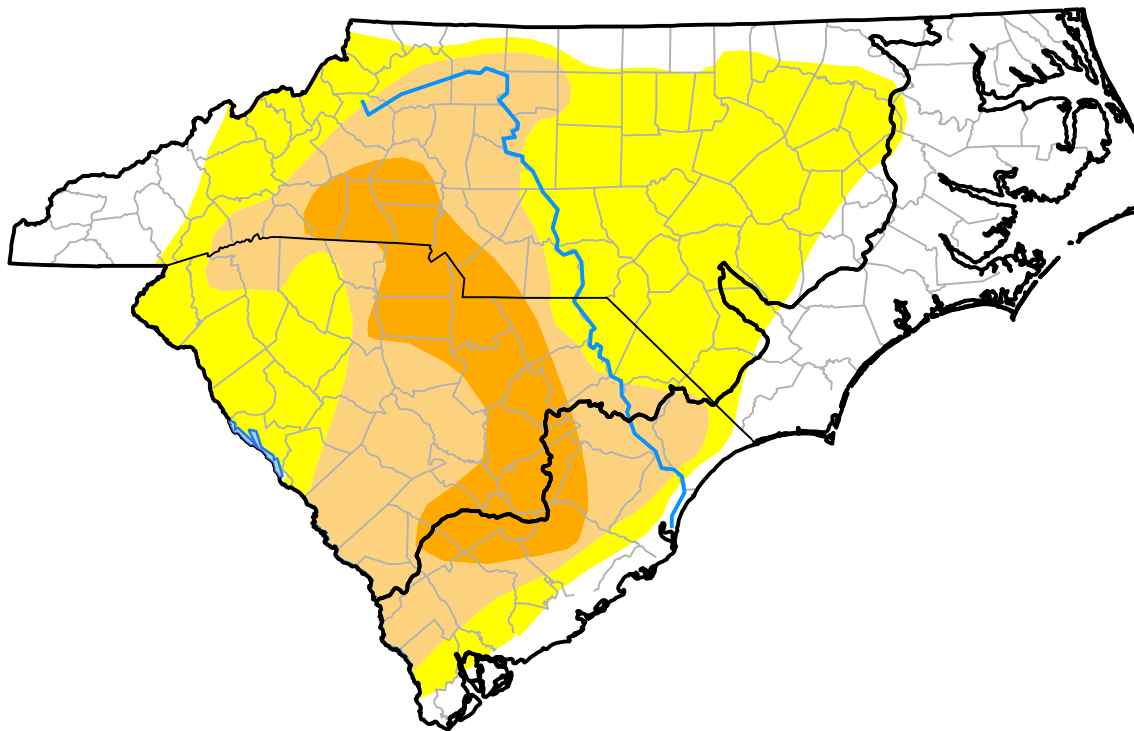


# U.S. Drought Monitor

## Coastal Carolinas RDEWS

**August 4, 2015**  
 (Released Thursday, Aug. 6, 2015)  
 Valid 8 a.m. EDT



*Drought Conditions (Percent Area)*

	None	D0-D4	D1-D4	D2-D4	D3-D4	D4
<b>Current</b>	70.34	29.66	16.69	4.37	0.00	0.00
<b>Last Week</b> <i>07-30-2015</i>	76.25	23.75	14.42	0.00	0.00	0.00
<b>3 Months Ago</b> <i>05-07-2015</i>	100.00	0.00	0.00	0.00	0.00	0.00
<b>Start of Calendar Year</b> <i>12-31-2014</i>	87.83	12.17	0.00	0.00	0.00	0.00
<b>Start of Water Year</b> <i>10-02-2014</i>	94.28	5.72	0.00	0.00	0.00	0.00
<b>One Year Ago</b> <i>08-07-2014</i>	95.84	4.16	0.00	0.00	0.00	0.00

*Intensity:*



*The Drought Monitor focuses on broad-scale conditions. Local conditions may vary. For more information on the Drought Monitor, go to <https://droughtmonitor.unl.edu/About.aspx>*

*Author:*

Mark Svoboda  
 National Drought Mitigation Center

