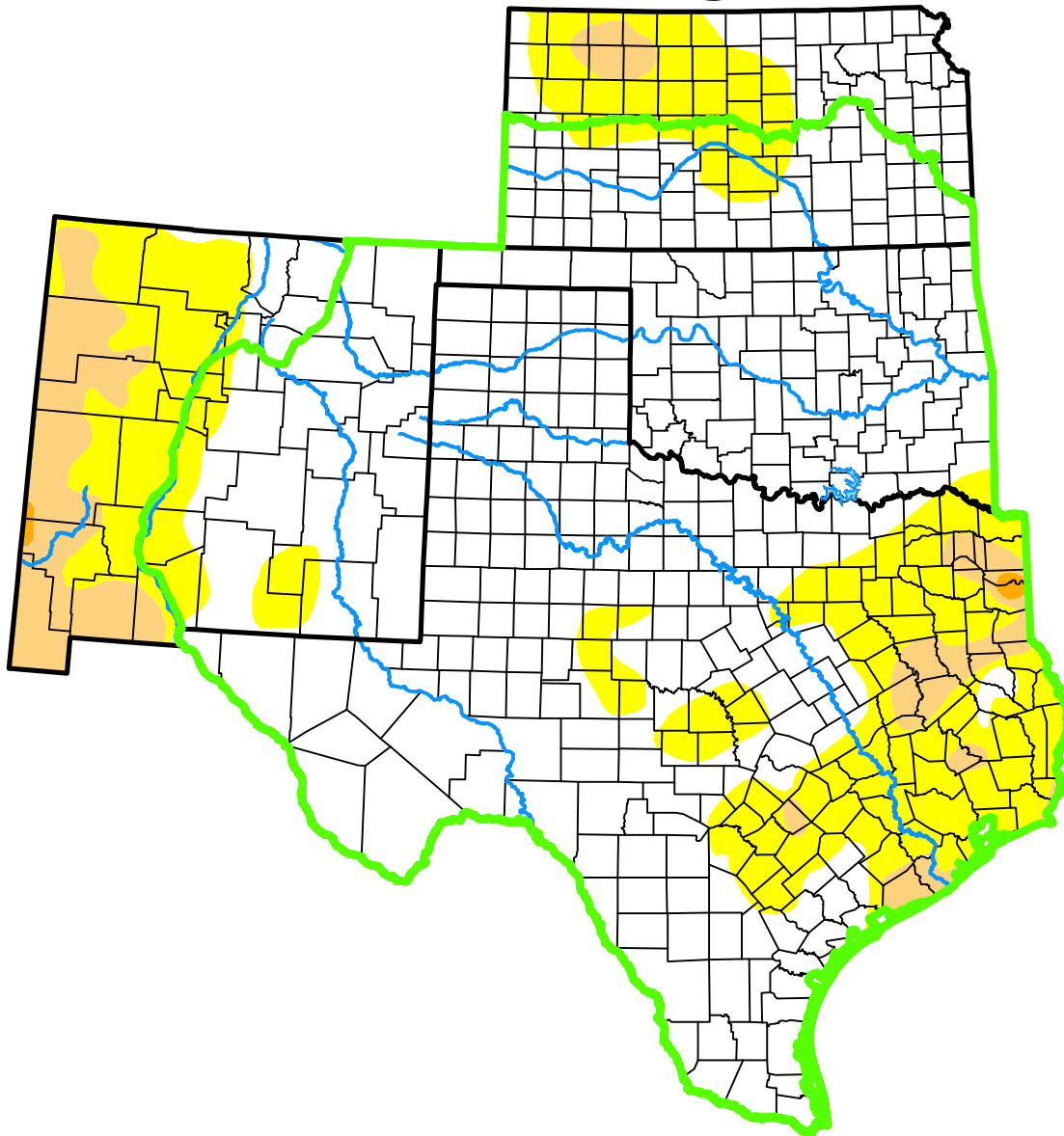


U.S. Drought Monitor

Southern Plains DEWS and Surrounding Areas

August 4, 2015
 (Released Thursday, Aug. 6, 2015)
 Valid 8 a.m. EDT



Drought Conditions (Percent Area)

	None	D0	D1	D2	D3	D4
Current	79.11	18.12	2.66	0.11	0.00	0.00
Last Week <i>07-28-2015</i>	87.82	11.78	0.39	0.00	0.00	0.00
3 Months Ago <i>05-05-2015</i>	47.74	12.41	19.13	14.29	4.67	1.76
Start of Calendar Year <i>12-30-2014</i>	29.70	21.51	21.59	16.28	8.10	2.82
Start of Water Year <i>09-30-2014</i>	23.56	22.06	22.47	21.36	8.19	2.36
One Year Ago <i>08-05-2014</i>	12.98	20.60	29.11	25.38	9.79	2.13

(Statistics for area highlighted in green)

Intensity:

- None
- D0 Abnormally Dry
- D1 Moderate Drought
- D2 Severe Drought
- D3 Extreme Drought
- D4 Exceptional Drought

The Drought Monitor focuses on broad-scale conditions. Local conditions may vary. For more information on the Drought Monitor, go to <https://droughtmonitor.unl.edu/About.aspx>

Author:

Mark Svoboda
 National Drought Mitigation Center

