

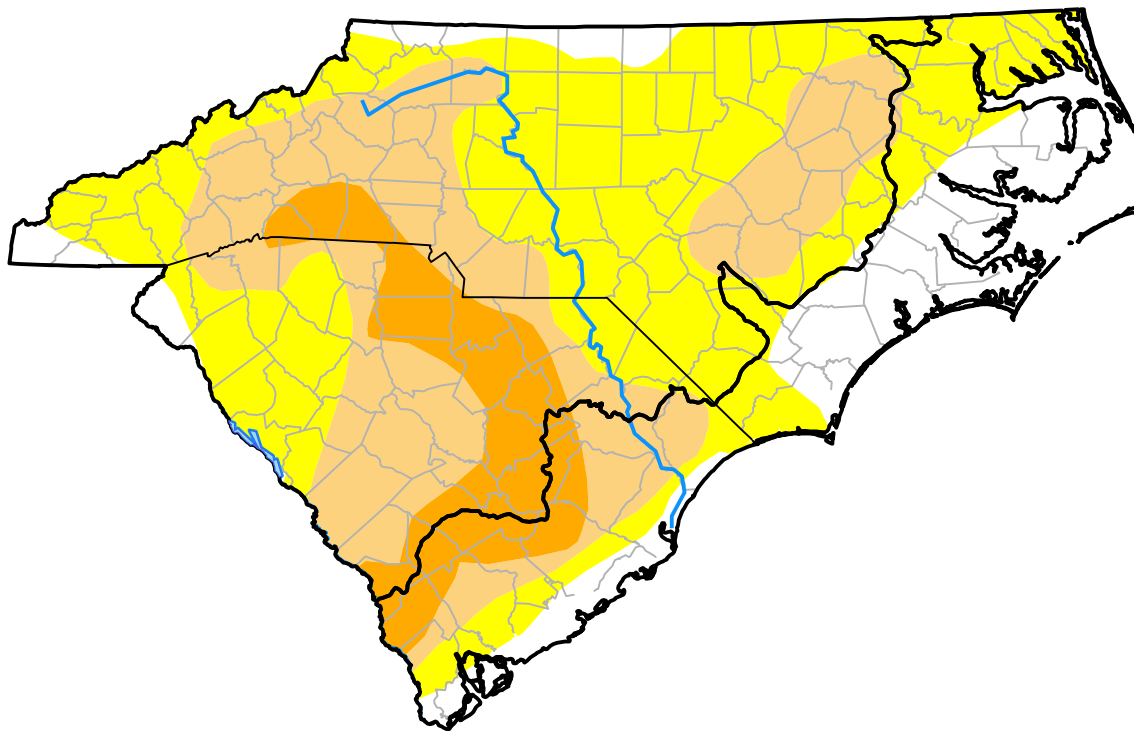
Carolinas RDEWS and Surrounding Areas

(Released Thursday, Aug. 27, 2015)

10:00 a.m. EDT

Drought Conditions (Percent Area)

	None	D0	D1	D2	D3	D4
Current	14.91	43.58	29.78	11.73	0.00	0.00
Last Week <i>08-20-2015</i>	19.26	37.09	29.42	14.24	0.00	0.00
3 Months Ago <i>05-28-2015</i>	48.21	51.79	0.00	0.00	0.00	0.00
Start of Calendar Year <i>12-31-2014</i>	87.15	12.85	0.00	0.00	0.00	0.00
Start of Water Year <i>10-02-2014</i>	73.31	26.69	0.00	0.00	0.00	0.00
One Year Ago <i>08-28-2014</i>	91.28	8.72	0.00	0.00	0.00	0.00



Intensity:

- None
- D0 Abnormally Dry
- D1 Moderate Drought
- D2 Severe Drought
- D3 Extreme Drought
- D4 Exceptional Drought

The Drought Monitor focuses on broad-scale conditions. Local conditions may vary. For more information on the Drought Monitor, go to <https://droughtmonitor.unl.edu/About.aspx>

Author:

Anthony Artusa
NOAA/NWS/NCEP/CPC

