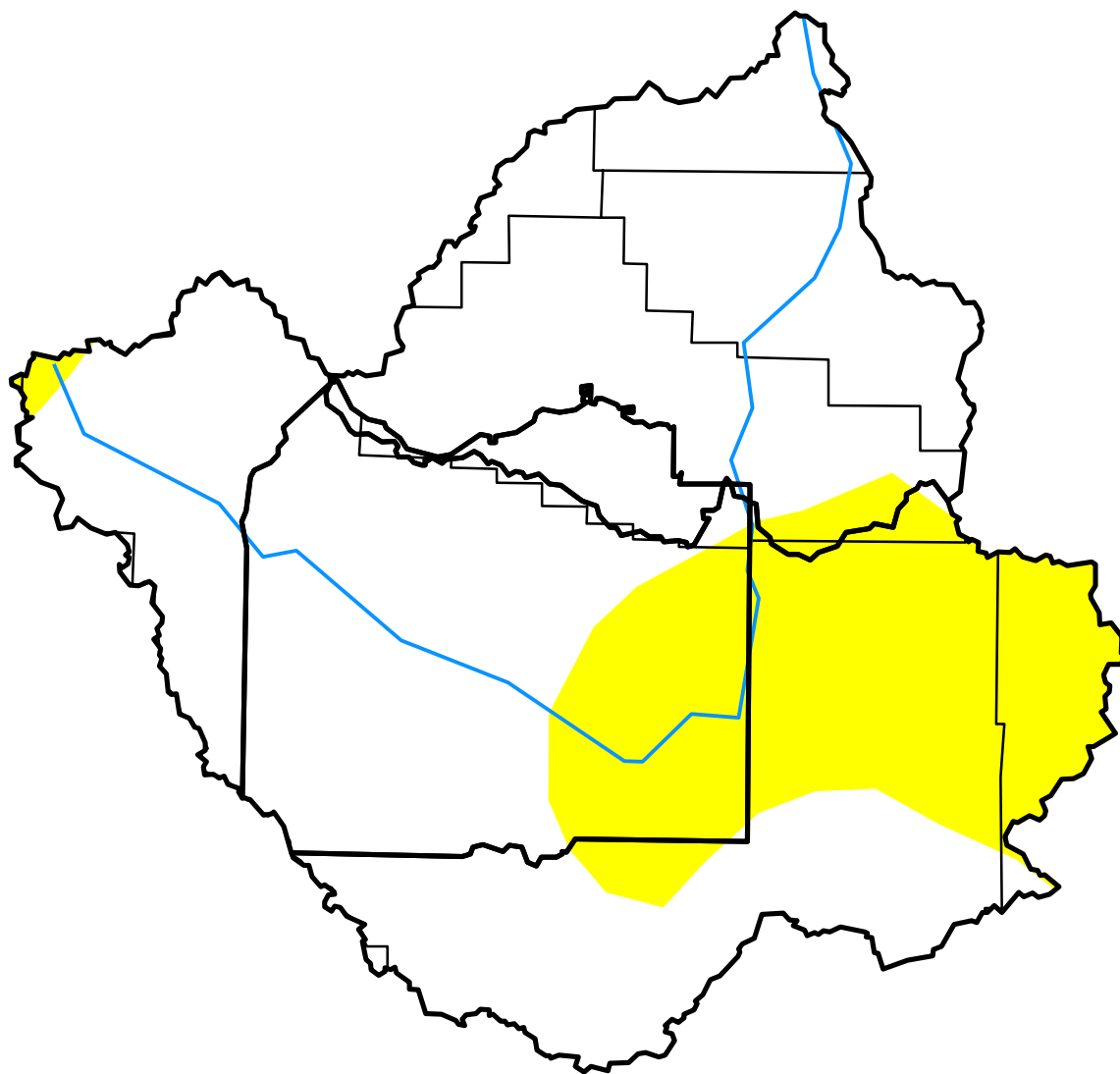


U.S. Drought Monitor

Wind River and Surrounding Area

October 27, 2015
 (Released Thursday, Oct. 29, 2015)
 Valid 8 a.m. EDT



Drought Conditions (Percent Area)

	None	D0-D4	D1-D4	D2-D4	D3-D4	D4
Current	75.92	24.08	0.00	0.00	0.00	0.00
Last Week <i>10-20-2015</i>	74.99	25.01	0.00	0.00	0.00	0.00
3 Months Ago <i>07-28-2015</i>	99.55	0.45	0.00	0.00	0.00	0.00
Start of Calendar Year <i>12-30-2014</i>	100.00	0.00	0.00	0.00	0.00	0.00
Start of Water Year <i>09-29-2015</i>	74.90	25.10	0.00	0.00	0.00	0.00
One Year Ago <i>10-28-2014</i>	100.00	0.00	0.00	0.00	0.00	0.00

Intensity:

- D0 Abnormally Dry
- D1 Moderate Drought
- D2 Severe Drought
- D3 Extreme Drought
- D4 Exceptional Drought

The Drought Monitor focuses on broad-scale conditions. Local conditions may vary. See accompanying text summary for forecast statements.

Author:

Brad Rippey
 U.S. Department of Agriculture

