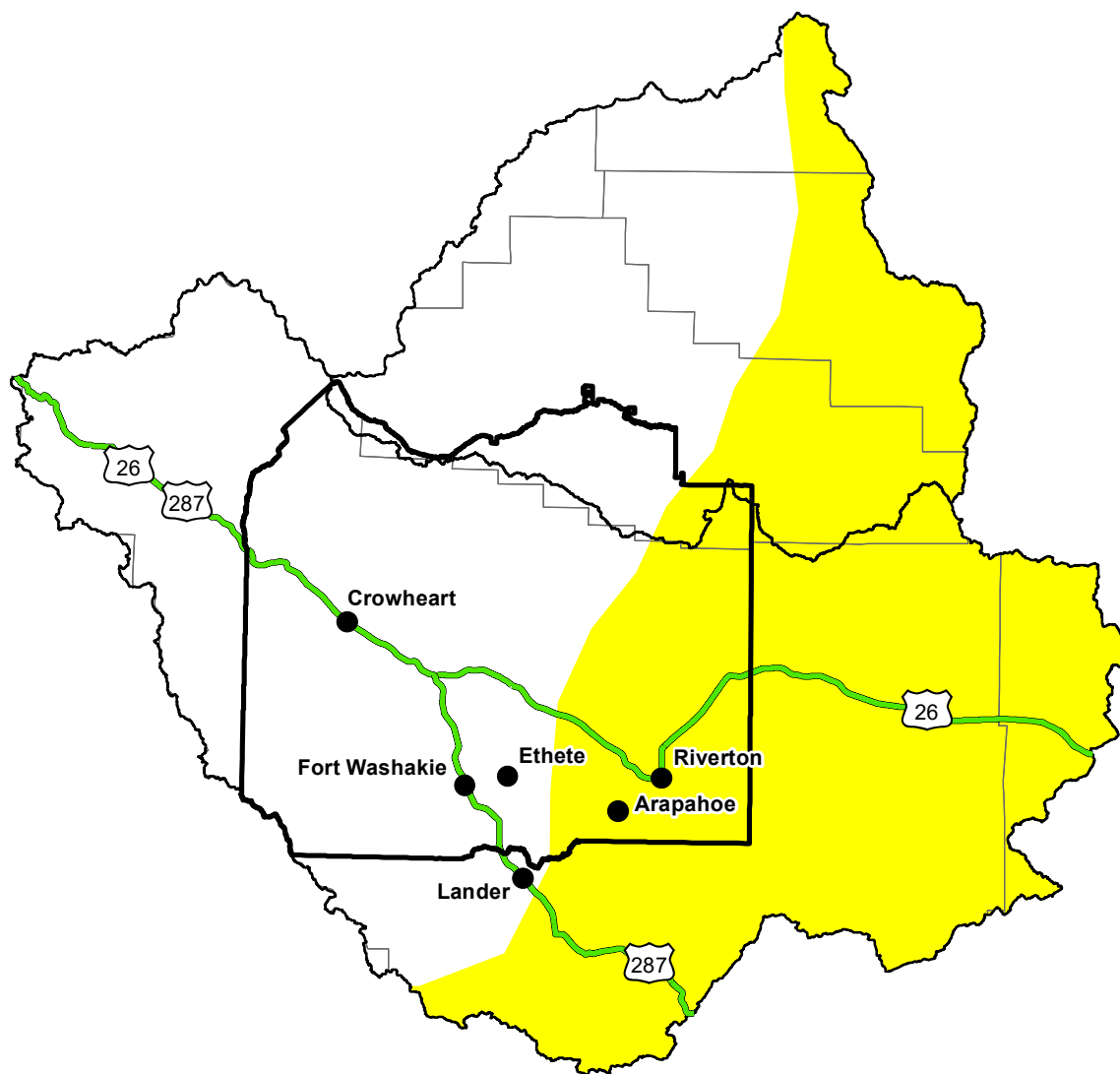


U.S. Drought Monitor

Wind River and Surrounding Area

November 3, 2015
 (Released Thursday, Nov. 5, 2015)
 Valid 7 a.m. EST



Drought Conditions (Percent Area)

	None	D0-D4	D1-D4	D2-D4	D3-D4	D4
Current	0.00	0.00	0.00	0.00	0.00	0.00
Last Week 10-29-2015	0.00	0.00	0.00	0.00	0.00	0.00
3 Months Ago 08-06-2015	0.00	0.00	0.00	0.00	0.00	0.00
Start of Calendar Year 12-31-2014	0.00	0.00	0.00	0.00	0.00	0.00
Start of Water Year 10-01-2015	0.00	0.00	0.00	0.00	0.00	0.00
One Year Ago 11-06-2014	0.00	0.00	0.00	0.00	0.00	0.00

Note: Statistics are for the surrounding area including the reservation.

Intensity:

None	D2 Severe Drought
D0 Abnormally Dry	D3 Extreme Drought
D1 Moderate Drought	D4 Exceptional Drought

The Drought Monitor focuses on broad-scale conditions. Local conditions may vary. For more information on the Drought Monitor, go to <https://droughtmonitor.unl.edu/About.aspx>

Author:

David Miskus
 NOAA/NWS/NCEP/CPC



<http://droughtmonitor.unl.edu/>