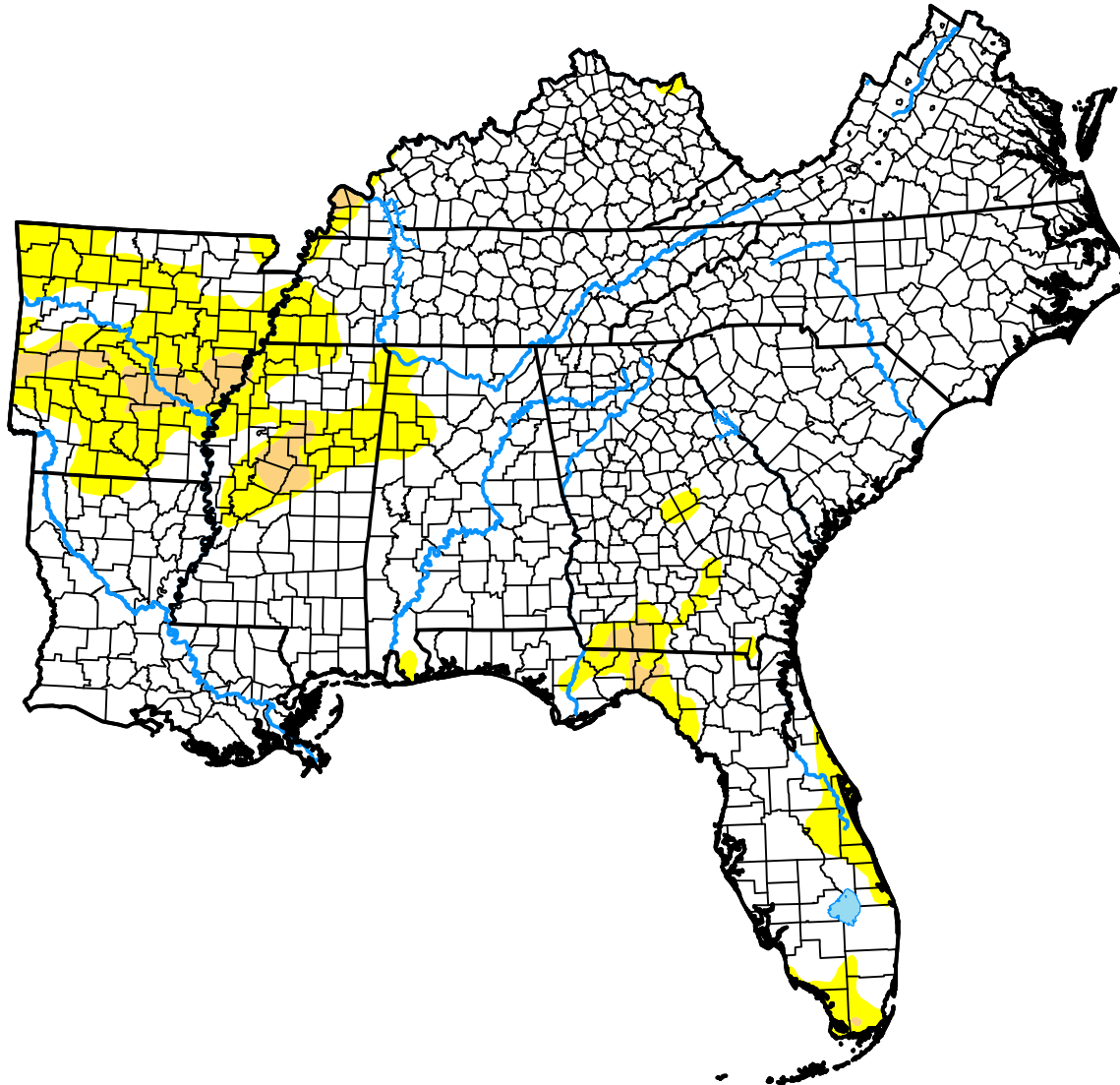


U.S. Drought Monitor

USDA Southeast Climate Hub

November 10, 2015
 (Released Thursday, Nov. 12, 2015)
 Valid 7 a.m. EST



Drought Conditions (Percent Area)

	None	D0-D4	D1-D4	D2-D4	D3-D4	D4
Current	84.27	15.73	2.12	0.00	0.00	0.00
Last Week <i>11-03-2015</i>	75.80	24.20	4.31	0.00	0.00	0.00
3 Months Ago <i>08-11-2015</i>	51.30	48.70	19.44	4.41	0.13	0.00
Start of Calendar Year <i>12-30-2014</i>	74.85	25.15	3.58	0.00	0.00	0.00
Start of Water Year <i>09-29-2015</i>	45.45	54.55	23.30	9.69	2.46	0.00
One Year Ago <i>11-11-2014</i>	60.18	39.82	8.22	0.40	0.00	0.00

Intensity:



The Drought Monitor focuses on broad-scale conditions. Local conditions may vary. For more information on the Drought Monitor, go to <https://droughtmonitor.unl.edu/About.aspx>

Author:

Richard Tinker
 CPC/NOAA/NWS/NCEP



droughtmonitor.unl.edu