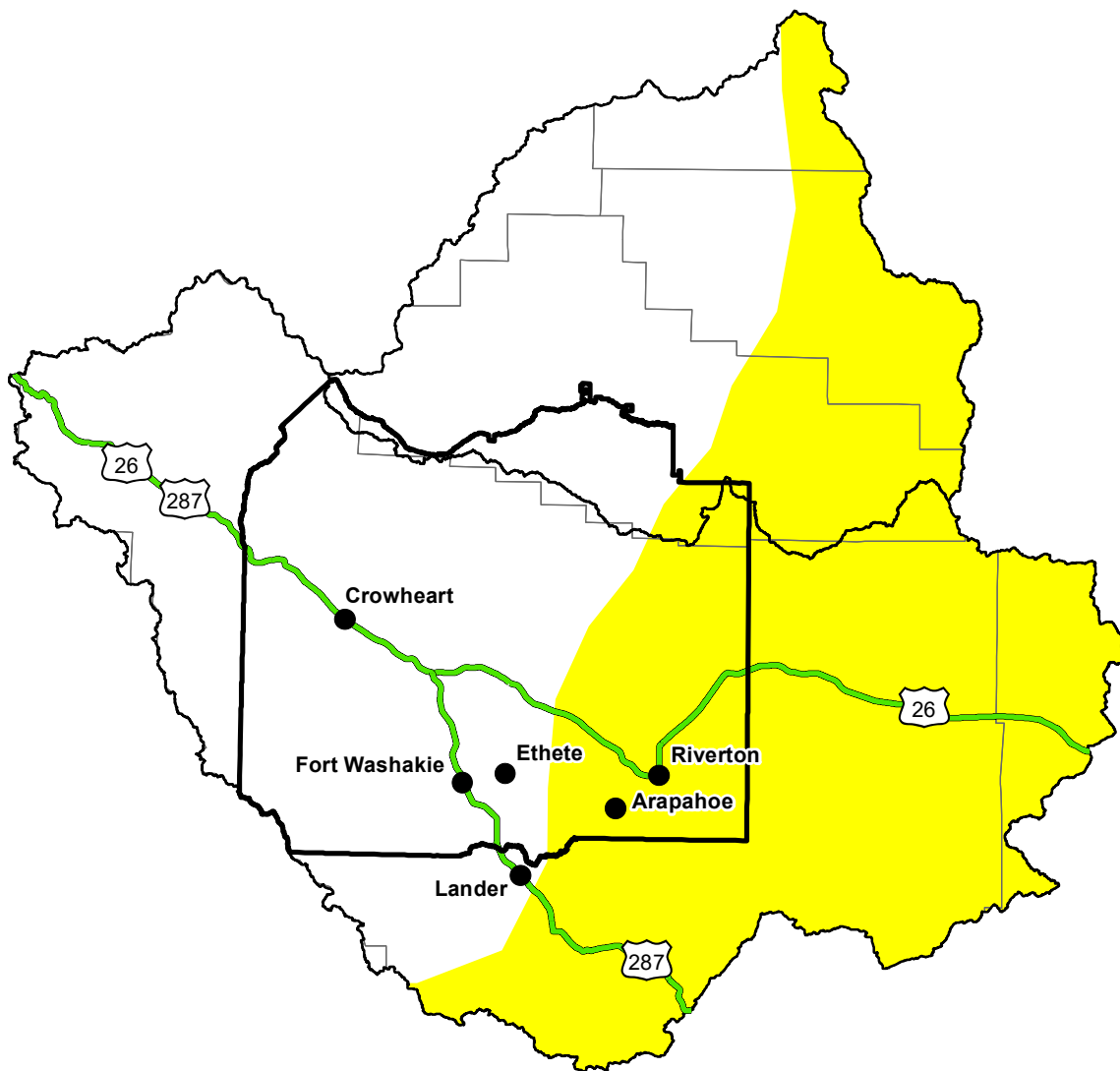


U.S. Drought Monitor

Wind River and Surrounding Area

December 29, 2015
 (Released Thursday, Dec. 31, 2015)
 Valid 7 a.m. EST



Drought Conditions (Percent Area)

	None	D0	D1	D2	D3	D4
Current	0.00	0.00	0.00	0.00	0.00	0.00
Last Week <i>12-24-2015</i>	0.00	0.00	0.00	0.00	0.00	0.00
3 Months Ago <i>10-01-2015</i>	0.00	0.00	0.00	0.00	0.00	0.00
Start of Calendar Year <i>12-31-2014</i>	0.00	0.00	0.00	0.00	0.00	0.00
Start of Water Year <i>10-01-2015</i>	0.00	0.00	0.00	0.00	0.00	0.00
One Year Ago <i>12-31-2014</i>	0.00	0.00	0.00	0.00	0.00	0.00

Note: Statistics are for the surrounding area including the reservation.

Intensity:

- None
- D0 Abnormally Dry
- D1 Moderate Drought
- D2 Severe Drought
- D3 Extreme Drought
- D4 Exceptional Drought

The Drought Monitor focuses on broad-scale conditions. Local conditions may vary. For more information on the Drought Monitor, go to <https://droughtmonitor.unl.edu/About.aspx>

Author:

Chris Fenimore
 NCEI/NESDIS/NOAA

