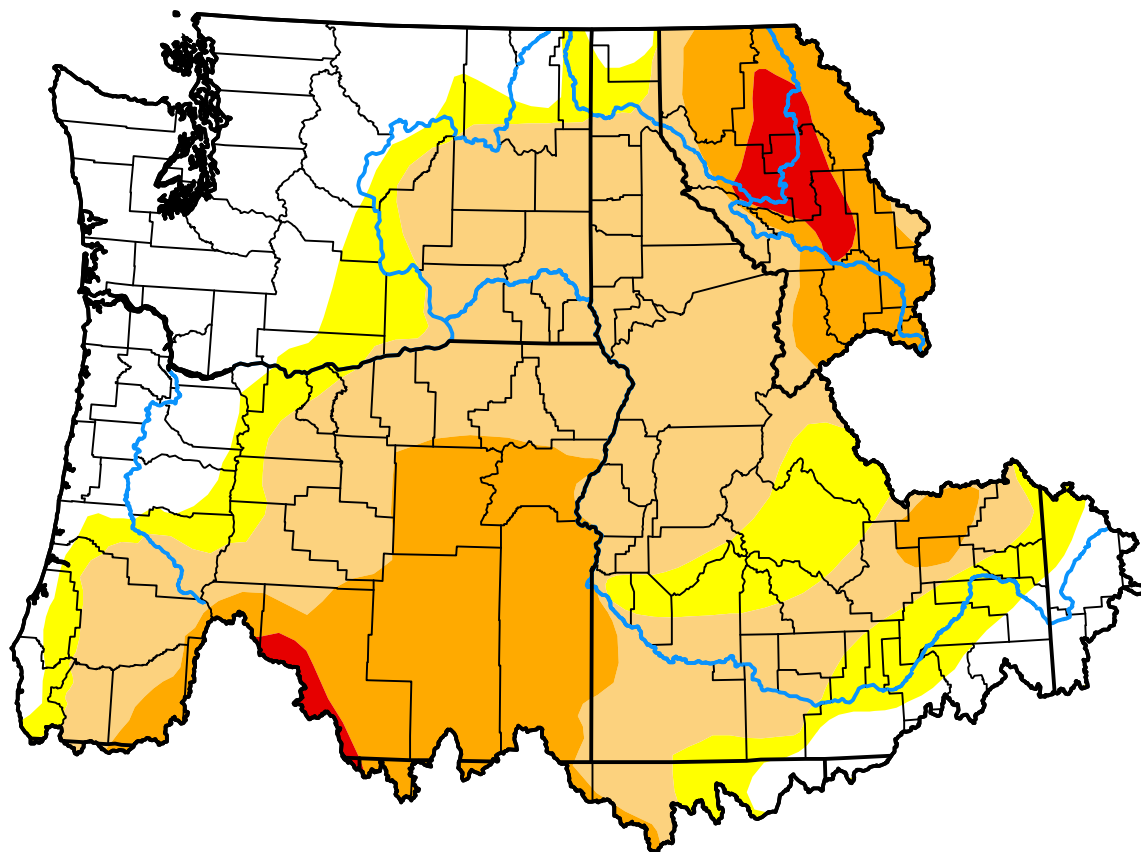


# U.S. Drought Monitor

## Pacific Northwest Watershed

**January 5, 2016**  
 (Released Thursday, Jan. 7, 2016)  
 Valid 7 a.m. EST



*Drought Conditions (Percent Area)*

	None	D0-D4	D1-D4	D2-D4	D3-D4	D4
<b>Current</b>	24.34	75.66	60.49	22.02	2.39	0.00
<b>Last Week</b> 12-31-2015	24.34	75.66	62.19	38.34	14.30	0.00
<b>3 Months Ago</b> 10-08-2015	2.55	97.45	93.11	82.43	54.98	0.00
<b>Start of Calendar Year</b> 12-31-2015	24.34	75.66	62.19	38.34	14.30	0.00
<b>Start of Water Year</b> 10-01-2015	0.03	99.97	94.08	81.91	55.22	0.00
<b>One Year Ago</b> 01-08-2015	35.21	64.79	49.35	24.53	11.14	0.00

### Intensity:

None	D2 Severe Drought
D0 Abnormally Dry	D3 Extreme Drought
D1 Moderate Drought	D4 Exceptional Drought

*The Drought Monitor focuses on broad-scale conditions. Local conditions may vary. For more information on the Drought Monitor, go to <https://droughtmonitor.unl.edu/About.aspx>*

### Author:

Brian Fuchs  
 National Drought Mitigation Center



**droughtmonitor.unl.edu**