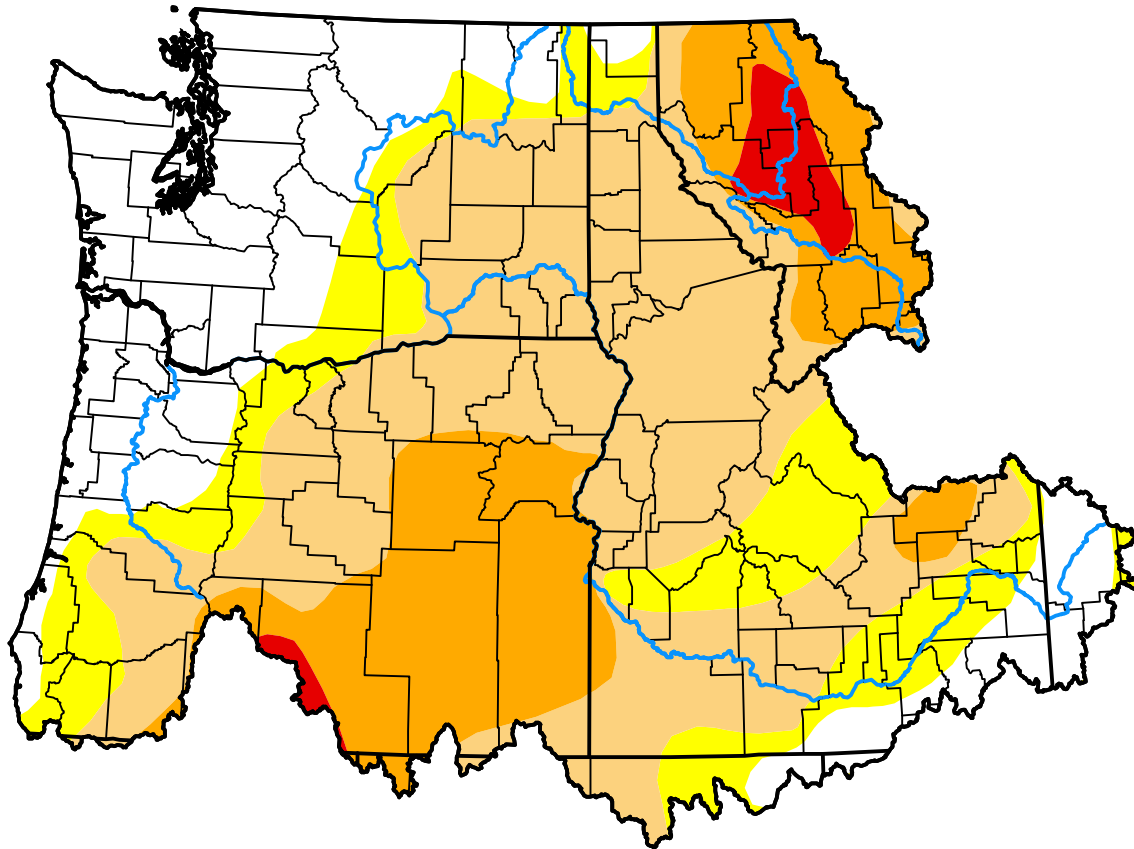


U.S. Drought Monitor

Pacific Northwest Watershed

January 19, 2016
 (Released Thursday, Jan. 21, 2016)
 Valid 7 a.m. EST



Drought Conditions (Percent Area)

	None	D0-D4	D1-D4	D2-D4	D3-D4	D4
Current	24.68	75.32	59.07	20.56	2.24	0.00
Last Week <i>01-14-2016</i>	24.37	75.63	60.49	22.02	2.39	0.00
3 Months Ago <i>10-22-2015</i>	2.55	97.45	93.11	79.05	54.98	0.00
Start of Calendar Year <i>12-31-2015</i>	24.34	75.66	62.19	38.34	14.30	0.00
Start of Water Year <i>10-01-2015</i>	0.03	99.97	94.08	81.91	55.22	0.00
One Year Ago <i>01-22-2015</i>	39.38	60.62	44.27	24.00	11.14	0.00

Intensity:



The Drought Monitor focuses on broad-scale conditions. Local conditions may vary. For more information on the Drought Monitor, go to <https://droughtmonitor.unl.edu/About.aspx>

Author:

Mark Svoboda
 National Drought Mitigation Center

