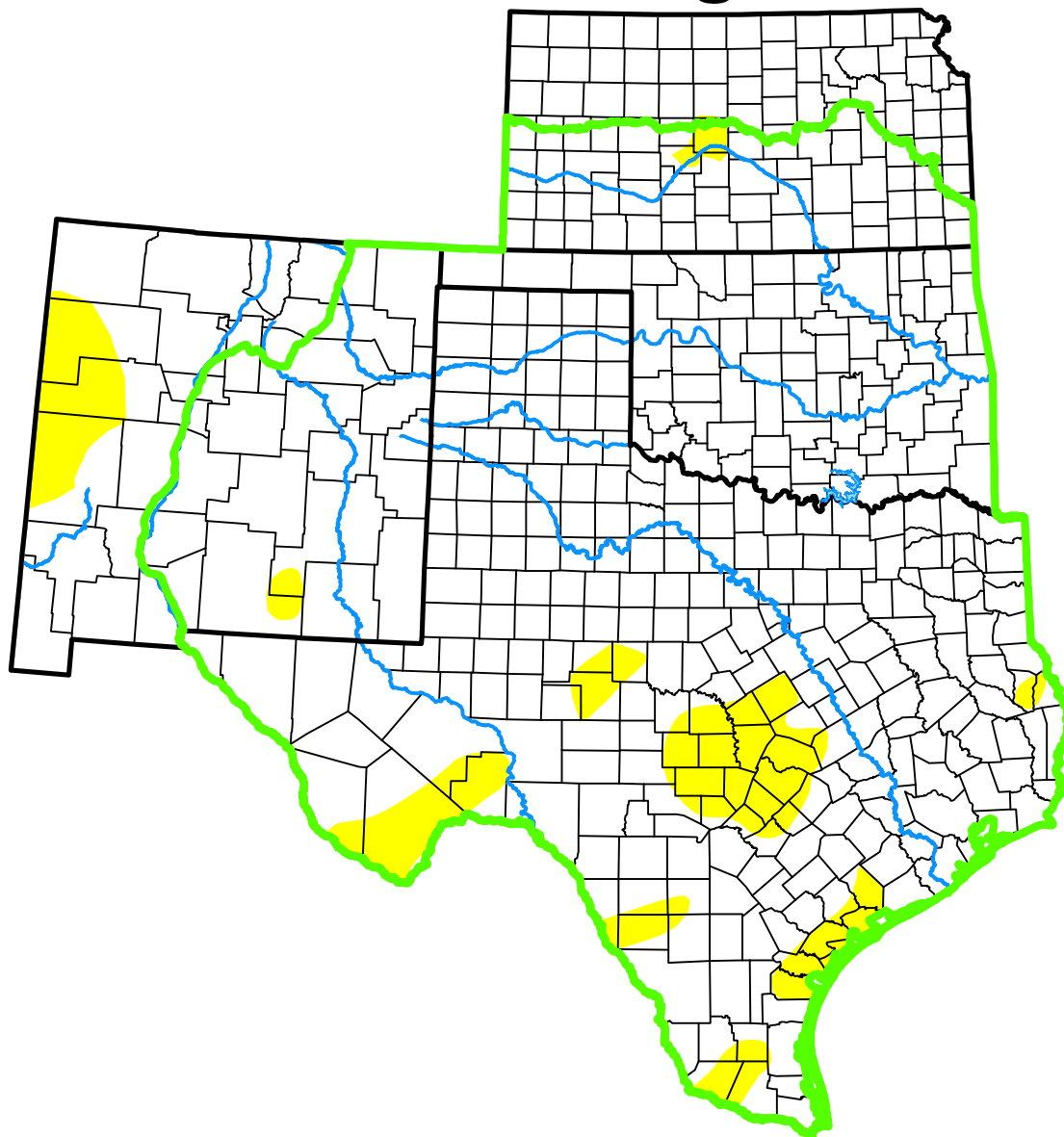


U.S. Drought Monitor

Southern Plains DEWS and Surrounding Areas



February 9, 2016

(Released Thursday, Feb. 11, 2016)

Valid 7 a.m. EST

Drought Conditions (Percent Area)

	None	D0-D4	D1-D4	D2-D4	D3-D4	D4
Current	92.23	7.77	0.00	0.00	0.00	0.00
Last Week <i>02-02-2016</i>	98.05	1.95	0.00	0.00	0.00	0.00
3 Months Ago <i>11-10-2015</i>	79.86	20.14	4.79	0.00	0.00	0.00
Start of Calendar Year <i>12-29-2015</i>	96.54	3.46	0.00	0.00	0.00	0.00
Start of Water Year <i>09-29-2015</i>	50.14	49.86	25.82	11.59	3.93	0.00
One Year Ago <i>02-10-2015</i>	30.22	69.78	45.93	27.42	11.93	3.60

(Statistics for area highlighted in green)

Intensity:

None	D2 Severe Drought
D0 Abnormally Dry	D3 Extreme Drought
D1 Moderate Drought	D4 Exceptional Drought

The Drought Monitor focuses on broad-scale conditions. Local conditions may vary. For more information on the Drought Monitor, go to <https://droughtmonitor.unl.edu/About.aspx>

Author:

Anthony Artusa
NOAA/NWS/NCEP/CPC



droughtmonitor.unl.edu