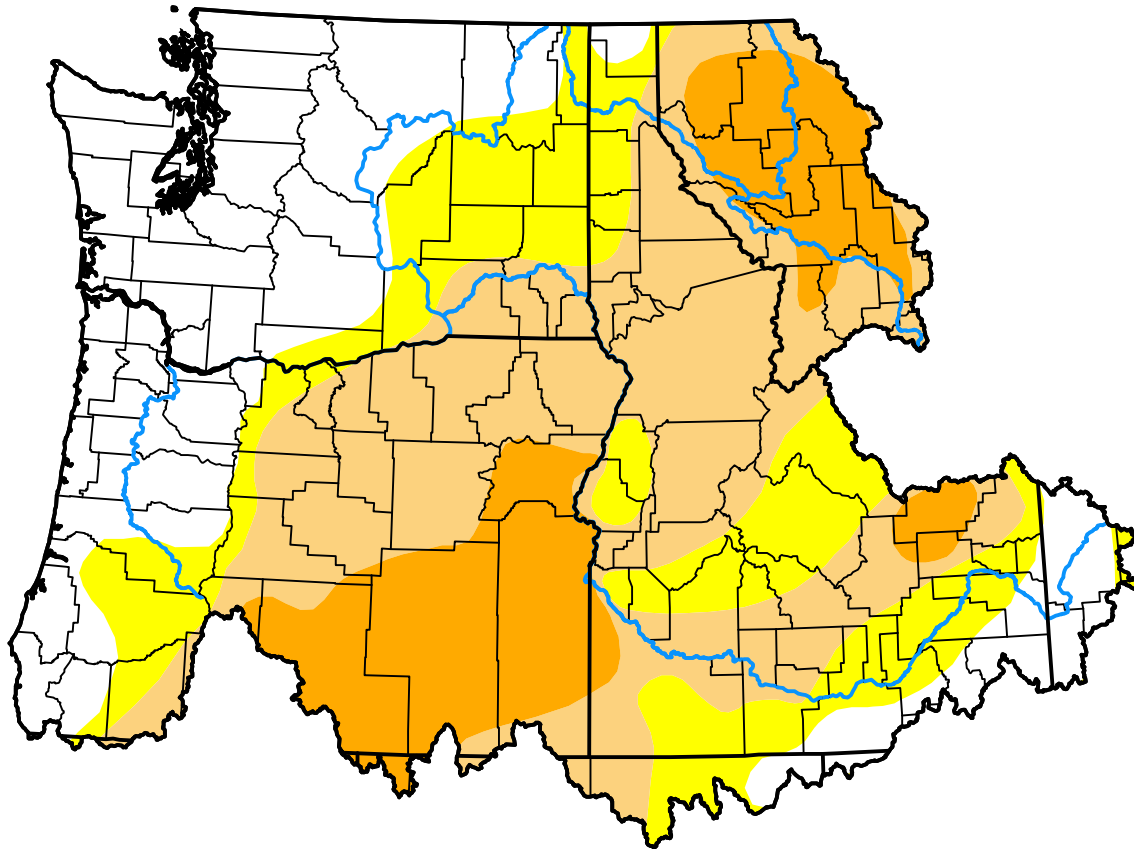


# U.S. Drought Monitor

## Pacific Northwest Watershed

**February 16, 2016**  
 (Released Thursday, Feb. 18, 2016)  
 Valid 7 a.m. EST



*Drought Conditions (Percent Area)*

	None	D0-D4	D1-D4	D2-D4	D3-D4	D4
<b>Current</b>	29.40	70.60	49.32	16.77	0.00	0.00
<b>Last Week</b> <i>02-11-2016</i>	27.38	72.62	51.80	17.90	1.90	0.00
<b>3 Months Ago</b> <i>11-19-2015</i>	3.27	96.73	81.19	67.96	37.19	0.00
<b>Start of Calendar Year</b> <i>12-31-2015</i>	24.34	75.66	62.19	38.34	14.30	0.00
<b>Start of Water Year</b> <i>10-01-2015</i>	0.03	99.97	94.08	81.91	55.22	0.00
<b>One Year Ago</b> <i>02-19-2015</i>	37.46	62.54	43.43	19.73	10.59	0.00

***Intensity:***



*The Drought Monitor focuses on broad-scale conditions. Local conditions may vary. For more information on the Drought Monitor, go to <https://droughtmonitor.unl.edu/About.aspx>*

***Author:***

Eric Luebehusen  
 U.S. Department of Agriculture



**droughtmonitor.unl.edu**